

The workshop that prepared the guides for parent-teacher conferences included the following teachers and principals: Mrs. Viola Spray, chairman; Mrs. Anne M. Smith, secretary; Mrs. Emma Miller, Evelyn Mulhaly, May Murray, Paul Brennan, Viola Bruchten, and Frank Spotts. The Board of Education representative was Mrs. Edward A. Rochau, and



Board of Education representative will go to classrooms for discussion with consultants.



# Town Recreation Program Serves Its Community

## A Full Yearly Program Has Been Organized For All Age Groups: Attendance Voices Enthusiasm

The rapid pace of twentieth century living has been tempered by the place in the town's program.

The Recreation Department under Commissioner Elmer Hyde and Superintendent Robert Cook has developed and extended a program with objectives designed to bring health, education and physical well being to youth of a municipal government; and to create emotional outlets for adult age groups.

In combining church and school groups, a nucleus for ideas took form and the subsequent burgesses of this union have brought about the expansion of the town's recreation program.

11 Innovations in the Program . . .

New activities of the department include these organizations: The Bicycle Club which had its inception almost a year ago at a meeting in the Recreation House, gives boys a chance to work indoors and outdoors, a weight-lifting group, which has grown fast in its following, and requires a separate room in the Municipal Stadium; A barber shop quartet is being tutored in harmony and a quartet in the amateur competition; 12th Nite is a post-Christmas celebration inaugurated last January. It functions as a communal project with the combined choirs of town churches exuding the vocal music, the police auxiliary handling the ideas and the Fire Department providing the lighting, all at the Municipal Stadium. A Christmas pageant of the Nativity Scene will decorate the Municipal Stadium this season. A sketch has already been worked out for the setting of the hallowed birth, and for a marquee display of Santa and his cavorting reindeer. The aid of local artists has been summoned in the personages of P. W. Deal, Art Director of Belleville schools and Bob Valentine, successful commercial artist. Aside from the stadium display, the Belleville home-owners are being urged to decorate with decorative imagination. The locations of these decorated homes are being listed and published for the benefit of townspeople wishing to take a critical jaunt through these events. The department is encouraging a yuletide warmth that will kindle the season's spirit beyond a flickering; dramatic classes have been formed for persons desiring a creative outlet and plans for a sketching class, initiated by a local artist, are being formulated; a girl basketball group which meets each Thursday evening during the season was established to draw concentration away from programs for boys only. The departments' programs have a rounded perspective.

The department has other special events scheduled year-round: An Easter Egg hunt has kids pecking for prizes in the stadium in quest of 1,000 hidden eggs, 300 of which, when uncovered, merit a special prize; a 26 mile Tour of Belleville bike race held in May; a circus and field day with fireworks on the 4th of July; a Halloween celebration with costumed kids competing for prizes in the stadium.

For an athletic program baseball leagues have been formed for all age groups in hard ball and soft ball. The "Little League" launches youngsters from 8 to 12 years on their baseball careers. Those who do not make the league go to the "Farm League" for a season and are brought up the following year.

An interesting summer schedule takes care of the indolent months separating school terms. It is highlighted by teenage dances, playground showers to combat the summer heat, a course in handicraft, a football clinic which cranks aspirants for high school

### Life at BHS As We See It



By Elaine Wische and Lois Blomcke

Well, all we can say is that Saturday is our day for football and not Monday. As everyone probably knows by now Belleville lost its second game to Kearny, 21-7. Here's hoping we can chalk up another win on Thanksgiving Day even though it isn't a Saturday game.

The Twirp Dance last Saturday was a great success as usual. Partly because of the credit for its success goes to Ralph Conte and his band for the wonderful show they put on, but more credit goes to the girls who always seem to make the dance a success.

The Monad staff is really in the swing now. All the Senior pictures have been taken and now the staff is waiting for suggestions as to how to improve on it to the yearbook. If you do have any suggestions please hurry and give them to any staff member.

Our drum-major, Pat Smith, really looked terrific on the stage last Friday. But whatever happened to the captain, Elise Bergersen was sick, which is a perfectly good excuse. But it seems Elaine Wische sent her uniform to the cleaners in some far-off town and the storm deduced the delivery of it. Elaine, please a little hard to believe. Are you sure you weren't just stage-struck?

Mrs. Frank Isbell

Mrs. Laura Authalia Isbell of 1 Essex Street, prominent many years ago in the West as a concert singer and choir director, died Tuesday, November 12, after a brief illness. The widow of Frank Isbell, was 86.

Mrs. Isbell was member of a pioneer Kansas family. She was born at Leavenworth, Kan., where her parents had gone by covered wagon. As a soprano, Mrs. Isbell gave concerts in the West and lived in that part of the country and in Florida before moving to New Jersey. She lived in Maplewood, where she was a member of the Contemporary Club and the Maplewood Woman's Club, before coming to Belleville six years ago.

She was a member of the Second Methodist Church of St. Petersburg, Fla., and the Bethlehem Chapter, O.E.S. of that city.

She leaves two sons, Frank E. Isbell of Boise, Ida., and William D. Isbell of Albany, Ore.; two daughters, Mrs. Dore N. Miller, with whom she made her home in Belleville, and Mrs. Vivian Franklin Barker, also of Belleville; two granddaughters and five great-grandchildren.

Rev. C. Albertus Hewitt, pastor of Wesley Methodist Church,

### Remember When

5 Years Ago

Words of wisdom and experience were spoken election day as that of Belleville's oldest residents and longest voters, Thomas J. O'Neill, 82 years old, and John C. Gill, 80 years old, cast their votes in the 1948 Presidential election. Harry S. Truman became victorious over Thomas E. Dewey.

A public response in the 1948 Community Chest made it necessary to extend the campaign.

A branch receiving station at Cleveland Station and the Erie Railroad has been established by the Railroad Express Service.

10 Years Ago

Mrs. Curtis Mitchell of Reservoir Place was bridge hostess to the Slitch and Chatter Club. Those present were Mrs. M. A. Berioff of Arlington; Mrs. Robert Pierce of Nutley; Mrs. Emma Murphy, Mrs. William Harris, Mrs. Charles Riggs, Mrs. Gertrude Brown, Mrs. C. H. Green, Mrs. Charles Stinson and Mrs. A. J. Bruegan of Belleville.

Elmer E. Struyk, son of Rev. John A. Struyk, has been selected as member of the Rutgers University Glee Club.

Sunday Movies are now legal in Belleville. The best Sunday performance at the Capital will be "Ever in My Heart" featuring Burgess Meredith and George E. Stone in "Midshipman Jack."

25 Years Ago

Leaving a trail of spilled milk and broken bottles in Washington Avenue, a team on a milk wagon ran several blocks and did not stop until the wagon was brought up against a telephone pole in Jerusalem Street. The horses were injured.


Miss Eleanor Fair, pretty 20-year-old Belleville girl, was chosen Miss Belleville and will represent Belleville at Loew's State Theater.

The following were installed to serve for the 1928 year at the meeting of the Avenue Chapter No. 73, O.E.S. Worthy Matrons, Mrs. A. E. Nelson; Worthy Patron, William Fredmore; Associate Matron, Mrs. Alice Pelt; Secretary, Mrs. Mary Price; Treasurer, Mrs. Sadie Young; Conductress, Mrs. Ellen Davis; Associate Conductress, Mrs. Stella Kroesen, and trustee for three years, Mr. Walter Price.

Conducted services Saturday, November 7, at the Wadsworth Funeral Home. Burial was in Resland Memorial Park, East Hanover.

EAST NUTLEY GARAGE  
C. A. FANELLI, Prop.  
Body and Fender Beating  
Expert Auto Repairing  
Phone: NUTLEY 2-6888  
55 Washington Avenue, Nutley, N. J.

### MAKING HISTORY with Rip Van Winkle



Now he dozes with no fears

Found clocks of all kinds with a look...

in the YELLOW PAGES of the telephone book

### De Witt SAVINGS AND LOAN ASSOCIATION

280 Washington Avenue, Belleville 9, N. J.  
Telephone: Plymouth 9-5264  
Hours: Daily, 9 to 4 and MONDAY EVENINGS, 6:30 to 8

Save any amount at any time. This friendly local institution invites your account, from \$1 to \$10,000

SAVINGS INSURED up to \$10,000

by U. S. Government instrumentality

2 1/2% Interest

Expert insurance help is vital before and after trouble strikes. And that's our business. Bring your protection problems to us!

All Forms Of Insurance  
Michael V. Albertine Agency  
631 Joralemon St., Belleville 9, N. J.  
Plymouth 9-5892

Savings Accounts • Mortgage Loans • G. I. Home Loans • Home Improvement Loans • Travelers' Cheques • Money Orders

the LOCAL buying guide for 9 out of 10 New Jersey Shoppers

New Jersey Bell Telephone Company

### Passaic Avenue School Prepares A School Paper

Students of the Passaic Avenue School have been meeting Wednesday afternoons, after school, to prepare a school paper. Grades four through eight are participating. News of the lower grades will be covered by reporters. The first issue will be presented in November.

Mrs. Adeline Bennett is faculty advisor for the group. The following staff has been chosen: Editors: Marilyn Toromoo and Marie Vasi; Assistant Editor: Ralph Caleone; News Editor: Elaine Mendonco; Sports Editor: Thomas Traviano; Literary Editor: Theresa Del Proto; Book Editor: Janice Reynolds; Art Editor: Thomas Traviano; Reports: Janet Bjugan, Angella Ferrara, Marion Ross and Phyllis Clemente.

## College . . . Chatter

"College Chatter" is a new article which will be found each week in the Belleville Times. It will be made interesting to all. If you will send in any news of your boys or girls at college, and their activities.

Joseph Gilchrist of 472 Washington Avenue, is a member of the dance committee at Seton Hall University. They are preparing for the Junior Class dance which will take place Saturday evening, November 22.

Miss Suzanne O'Brien, daughter of Mr. and Mrs. Raymond O'Brien of Oak Street, freshman at Mary Washington College of the University of Virginia, was chosen for the Glee Club this year.

Mr. and Mrs. Henry A. Kraft of 102 Nelson Street, Belleville, have been informed that their son, Fred, has been placed on the dean's list at West Point. A graduate of Belleville High School, Kraft was president of the National Honor Society and a member of the Student Council. Kraft was also a member of the Belleville High School varsity football team. Kraft was appointed to the U. S. Military Academy at West Point by U. S. Representative Rodino.

In a message sent to H. D. Kittle, principal of Belleville High School, Mrs. Kraft stated that Fred was proud to have had the opportunity of attending Belleville High School.

Charles W. Maquire of 450 Washington Avenue, was elected president of the freshman class

at Newark College of Engineering. Mr. Maquire is an alumnus of Belleville High. While a student there, he was quite active in the student body, was captain of the basketball team, and a member of the varsity basketball team.

### Service News

This article, "In The Service," is a new feature, you will find each week in our paper. With your help we will have it filled with interesting news of our boys and girls. We invite you all, to send to us, any news pertaining to the Armed Forces of the United States.

Mr. and Mrs. Eugene C. Mougel Jr., of 23 Lavergne Street, gave a coming home party to their son, Corporal Eugene C. Mougel on Saturday, November 7, 1963. Corporal Mougel has finished two years of service in the Marine Corp Air Station at Cherry Point, North Carolina as welder and later as being in Headquarters S. Q. Station, Military Police Detachment. A few friends and relatives were invited.

Sgt. Frederick J. Dentato, son of Mr. and Mrs. Julius Dentato, 28 King Street, took part last week in Exercise Mudrak, annual fall training maneuver of the U. S. Forces in Austria. Sgt. Dentato, who arrived in Austria last March, is communications chief with the 4th Armored Cavalry Reconnaissance Battalion's Headquarters Company. Since entering the Army in 1944, he has been assigned to the Bronze Star Medal, Combat Infantryman Badge, Good Conduct Medal and the European African-Middle Eastern Theater Ribbon.

PPC Paul H. Vesey, son of Mrs. Frances H. Vesey, of 61 Belavia Avenue, took part last week in Exercise Mudrak, annual fall training maneuver of the

# Advisory Council Organized To Improve Fire Protection

## Council Will Aid In Establishing Firemen's Training Programs: Annual Or Semi-Annual Officers Training School Centrally Located

An advisory council for the 521 volunteer and paid fire departments in New Jersey has been organized to improve and co-ordinate fire protection. The council, temporarily headed by H. R. Bogardus, manager of the technical division of the Fire Insurance Rating Organization of New Jersey, will meet December 15 at Fort Dix to elect a board of directors.

The council will operate as an independent noncommercial, non-political advisory organization for the advancement of all phases of fire protection and prevention, according to Bogardus. It will serve as a central clearing point for all fire service matters, including civil defense.

The council's first activity will be to aid in establishing and co-ordinating firemen's training programs at municipal and county levels. It is hoped to have at least one modern drill school in each county. An annual or semi-annual officers' training school will be set up in a central part of the state.

Recommendations will be made for additional fire prevention legislation and establishment of a

state-wide mutual aid program among fire departments. In the event of a major disaster or enemy attack.

The council, which will be known as the New Jersey State Firemen's Advisory Council, was organized at a meeting at Fort Dix attended by representatives of more than 20 firemen's organizations. About 30 other fire groups indicated their desire to become affiliated.

Officers chosen besides Bogardus are Walter G. Runyon of the Middlesex County Fire School, vice president; Clarence H. Douglas of the New Jersey State Fire Chiefs Association, secretary; and Edward H. Quick of the Hunterdon Firemen's Association, treasurer. They will serve until March.

New Jersey has 649 municipalities, of which 449 have volunteer departments, 34 part paid and 66 full paid departments. The remaining 48 have no department and depend for fire protection on neighboring communities.

### HAMILTON WATCHES

A Watched Agency  
Son of Mr. and Mrs. Frank Passannanti, of 70 Franklin Street, was stationed at Fort Dix, before his overseas assignment. He is a graduate of Belleville High School.

Army Private Pat S. Passannanti, whose wife, Viola, lives at 9 N. Eighth Street, Belleville, recently joined the 70th Armored Field Artillery Battalion in Nurnberg, Germany. Private Passannanti, son of Mr. and Mrs. Frank Passannanti, of 70 Franklin Street, was stationed at Fort Dix, before his overseas assignment. He is a graduate of Belleville High School.

### JOHN G. YOUNG

Plumbing - Heating - Oil & Gas Burners  
Kitchens Remodeled, Custom Built Cabinets  
Leader and Gutter Work  
Furnaces Vacuum Cleaned

Use Our Budget Plan For Payment  
14 NEW STREET PLYMOUTH 9-1476

### Delaporte & MacKinnon

PLUMBING - HEATING - TINNING

70 Belleville Avenue  
Belleville, N. J.  
Phone Plymouth 9-4323

# Which of these Ford Economy Trucks is right for you?

## WHAT A DEAL WE CAN GIVE YOU!



1963 sales have been 42% above last year, so your Ford Truck Dealer can afford to give you his best deal in years!

You can get a bargain in any of 130 new Ford Economy Truck models. Synchro-Silent transmission in every model . . . no extra cost. New set-back front axles for shorter turning! New Low-Engineer power! Choice of V-8's, Sixes! All new Drivized Cabs - world's most comfortable - to cut driver fatigue!

Now . . . wheel that old truck in to your Ford Dealer's for the greatest new truck bargains in years!

### Light duty truck with a heavy duty heart!

Ford's new F-250 Stake-Platform gives you over 7 1/2-ft. length by 6-ft. width to handle bulky loads. G.V.W. 6,900 lbs. Drivized Cab! Choice of Cost Clipper Six or Truck V-8.

### Biggest seller in its class!

New Ford F-500 outsells all other "1 1/2-tonners." Chassis-cab in 130- and 104-in. wheelbases accommodates custom bodies from 7 1/2 to 13 ft. long. Drivized Cabs, V-8 or Six. G.V.W. to 14,000 lbs.

### Light duty truck with a heavy duty heart!

Ford's new F-250 Stake-Platform gives you over 7 1/2-ft. length by 6-ft. width to handle bulky loads. G.V.W. 6,900 lbs. Drivized Cab! Choice of Cost Clipper Six or Truck V-8.

### Biggest seller in its class!

New Ford F-500 outsells all other "1 1/2-tonners." Chassis-cab in 130- and 104-in. wheelbases accommodates custom bodies from 7 1/2 to 13 ft. long. Drivized Cabs, V-8 or Six. G.V.W. to 14,000 lbs.

### Light duty truck with a heavy duty heart!

Ford's new F-250 Stake-Platform gives you over 7 1/2-ft. length by 6-ft. width to handle bulky loads. G.V.W. 6,900 lbs. Drivized Cab! Choice of Cost Clipper Six or Truck V-8.

### Biggest seller in its class!

New Ford F-500 outsells all other "1 1/2-tonners." Chassis-cab in 130- and 104-in. wheelbases accommodates custom bodies from 7 1/2 to 13 ft. long. Drivized Cabs, V-8 or Six. G.V.W. to 14,000 lbs.

### Light duty truck with a heavy duty heart!

Ford's new F-250 Stake-Platform gives you over 7 1/2-ft. length by 6-ft. width to handle bulky loads. G.V.W. 6,900 lbs. Drivized Cab! Choice of Cost Clipper Six or Truck V-8.

### Biggest seller in its class!

New Ford F-500 outsells all other "1 1/2-tonners." Chassis-cab in 130- and 104-in. wheelbases accommodates custom bodies from 7 1/2 to 13 ft. long. Drivized Cabs, V-8 or Six. G.V.W. to 14,000 lbs.

### Light duty truck with a heavy duty heart!

Ford's new F-250 Stake-Platform gives you over 7 1/2-ft. length by 6-ft. width to handle bulky loads. G.V.W. 6,900 lbs. Drivized Cab! Choice of Cost Clipper Six or Truck V-8.

### Biggest seller in its class!

New Ford F-500 outsells all other "1 1/2-tonners." Chassis-cab in 130- and 104-in. wheelbases accommodates custom bodies from 7 1/2 to 13 ft. long. Drivized Cabs, V-8 or Six. G.V.W. to 14,000 lbs.

### Light duty truck with a heavy duty heart!

Ford's new F-250 Stake-Platform gives you over 7 1/2-ft. length by 6-ft. width to handle bulky loads. G.V.W. 6,900 lbs. Drivized Cab! Choice of Cost Clipper Six or Truck V-8.

### Biggest seller in its class!

New Ford F-500 outsells all other "1 1/2-tonners." Chassis-cab in 130- and 104-in. wheelbases accommodates custom bodies from 7 1/2 to 13 ft. long. Drivized Cabs, V-8 or Six. G.V.W. to 14,000 lbs.

### Light duty truck with a heavy duty heart!

Ford's new F-250 Stake-Platform gives you over 7 1/2-ft. length by 6-ft. width to handle bulky loads. G.V.W. 6,900 lbs. Drivized Cab! Choice of Cost Clipper Six or Truck V-8.

### Biggest seller in its class!

New Ford F-500 outsells all other "1 1/2-tonners." Chassis-cab in 130- and 104-in. wheelbases accommodates custom bodies from 7 1/2 to 13 ft. long. Drivized Cabs, V-8 or Six. G.V.W. to 14,000 lbs.

### Light duty truck with a heavy duty heart!

Ford's new F-250 Stake-Platform gives you over 7 1/2-ft. length by 6-ft. width to handle bulky loads. G.V.W. 6,900 lbs. Drivized Cab! Choice of Cost Clipper Six or Truck V-8.

### Biggest seller in its class!

New Ford F-500 outsells all other "1 1/2-tonners." Chassis-cab in 130- and 104-in. wheelbases accommodates custom bodies from 7 1/2 to 13 ft. long. Drivized Cabs, V-8 or Six. G.V.W. to 14,000 lbs.

### Light duty truck with a heavy duty heart!

Ford's new F-250 Stake-Platform gives you over 7 1/2-ft. length by 6-ft. width to handle bulky loads. G.V.W. 6,900 lbs. Drivized Cab! Choice of Cost Clipper Six or Truck V-8.

### Biggest seller in its class!

New Ford F-500 outsells all other "1 1/2-tonners." Chassis-cab in 130- and 104-in. wheelbases accommodates custom bodies from 7 1/2 to 13 ft. long. Drivized Cabs, V-8 or Six. G.V.W. to 14,000 lbs.

### Light duty truck with a heavy duty heart!

Ford's new F-250 Stake-Platform gives you over 7 1/2-ft. length by 6-ft. width to handle bulky loads. G.V.W. 6,900 lbs. Drivized Cab! Choice of Cost Clipper Six or Truck V-8.

### Biggest seller in its class!

New Ford F-500 outsells all other "1 1/2-tonners." Chassis-cab in 130- and 104-in. wheelbases accommodates custom bodies from 7 1/2 to 13 ft. long. Drivized Cabs, V-8 or Six. G.V.W. to 14,000 lbs.

### Light duty truck with a heavy duty heart!

Ford's new F-250 Stake-Platform gives you over 7 1/2-ft. length by 6-ft. width to handle bulky loads. G.V.W. 6,900 lbs. Drivized Cab! Choice of Cost Clipper Six or Truck V-8.

### Biggest seller in its class!

New Ford F-500 outsells all other "1 1/2-tonners." Chassis-cab in 130- and 104-in. wheelbases accommodates custom bodies from 7 1/2 to 13 ft. long. Drivized Cabs, V-8 or Six. G.V.W. to 14,000 lbs.

### Light duty truck with a heavy duty heart!

Ford's new F-250 Stake-Platform gives you over 7 1/2-ft. length by 6-ft. width to handle bulky loads. G.V.W. 6,900 lbs. Drivized Cab! Choice of Cost Clipper Six or Truck V-8.

### Biggest seller in its class!

New Ford F-500 outsells all other "1 1/2-tonners." Chassis-cab in 130- and 104-in. wheelbases accommodates custom bodies from 7 1/2 to 13 ft. long. Drivized Cabs, V-8 or Six. G.V.W. to 14,000 lbs.

### Light duty truck with a heavy duty heart!

Ford's new F-250 Stake-Platform gives you over 7 1/2-ft. length by 6-ft. width to handle bulky loads. G.V.W. 6,900 lbs. Drivized Cab! Choice of Cost Clipper Six or Truck V-8.

### Biggest seller in its class!

New Ford F-500 outsells all other "1 1/2-tonners." Chassis-cab in 130- and 104-in. wheelbases accommodates custom bodies from 7 1/2 to 13 ft. long. Drivized Cabs, V-8 or Six. G.V.W. to 14,000 lbs.

### Light duty truck with a heavy duty heart!

Ford's new F-250 Stake-Platform gives you over 7 1/2-ft. length by 6-ft. width to handle bulky loads. G.V.W. 6,900 lbs. Drivized Cab! Choice of Cost Clipper Six or Truck V-8.

### Biggest seller in its class!

New Ford F-500 outsells all other "1 1/2-tonners." Chassis-cab in 130- and 104-in. wheelbases accommodates custom bodies from 7 1/2 to 13 ft. long. Drivized Cabs, V-8 or Six. G.V.W. to 14,000 lbs.

### Light duty truck with a heavy duty heart!

Ford's new F-250 Stake-Platform gives you over 7 1/2-ft. length by 6-ft. width to handle bulky loads. G.V.W. 6,900 lbs. Drivized Cab! Choice of Cost Clipper Six or Truck V-8.

### Biggest seller in its class!

New Ford F-500 outsells all other "1 1/2-tonners." Chassis-cab in 130- and 104-in. wheelbases accommodates custom bodies from 7 1/2 to 13 ft. long. Drivized Cabs, V-8 or Six. G.V.W. to 14,000 lbs.

### Light duty truck with a heavy duty heart!

Ford's new F-250 Stake-Platform gives you over 7 1/2-ft. length by 6-ft. width to handle bulky loads. G.V.W. 6,900 lbs. Drivized Cab! Choice of Cost Clipper Six or Truck V-8.

### Biggest seller in its class!

New Ford F-500 outsells all other "1 1/2-tonners." Chassis-cab in 130- and 104-in. wheelbases accommodates custom bodies from 7 1/2 to 13 ft. long. Drivized Cabs, V-8 or Six. G.V.W. to 14,000 lbs.

### Light duty truck with a heavy duty heart!

Ford's new F-250 Stake-Platform gives you over 7 1/2-ft. length by 6-ft. width to handle bulky loads. G.V.W. 6,900 lbs. Drivized Cab! Choice of Cost Clipper Six or Truck V-8.

### Biggest seller in its class!

New Ford F-500 outsells all other "1 1/2-tonners." Chassis-cab in 130- and 104-in. wheelbases accommodates custom bodies from 7 1/2 to 13 ft. long. Drivized Cabs, V-8 or Six. G.V.W. to 14,000 lbs.

### Light duty truck with a heavy duty heart!

Ford's new F-250 Stake-Platform gives you over 7 1/2-ft. length by 6-ft. width to handle bulky loads. G.V.W. 6,900 lbs. Drivized Cab! Choice of Cost Clipper Six or Truck V-8.

### Biggest seller in its class!

New Ford F-500 outsells all other "1 1/2-tonners." Chassis-cab in 130- and 104-in. wheelbases accommodates custom bodies from 7 1/2 to 13 ft. long. Drivized Cabs, V-8 or Six. G.V.W. to 14,000 lbs.

### Light duty truck with a heavy duty heart!

Ford's new F-250 Stake-Platform gives you over 7 1/2-ft. length by 6-ft. width to handle bulky loads. G.V.W. 6,900 lbs. Drivized Cab! Choice of Cost Clipper Six or Truck V-8.

### Biggest seller in its class!

New Ford F-500 outsells all other "1 1/2-tonners." Chassis-cab in 130- and 104-in. wheelbases accommodates custom bodies from 7 1/2 to 13 ft. long. Drivized Cabs, V-8 or Six. G.V.W. to 14,000 lbs.

### Light duty truck with a heavy duty heart!

Ford's new F-250 Stake-Platform gives you over 7 1/2-ft. length by 6-ft. width to handle bulky loads. G.V.W. 6,900 lbs. Drivized Cab! Choice of Cost Clipper Six or Truck V-8.

### Biggest seller in its class!

New Ford F-500 outsells all other "1 1/2-tonners." Chassis-cab in 130- and 104-in. wheelbases accommodates custom bodies from 7 1/2 to 13 ft. long. Drivized Cabs, V-8 or Six. G.V.W. to 14,000 lbs.

### Light duty truck with a heavy duty heart!

Ford's new F-250 Stake-Platform gives you over 7 1/2-ft. length by 6-ft. width to handle bulky loads. G.V.W. 6,900 lbs. Drivized Cab! Choice of Cost Clipper Six or Truck V-8.

### Biggest seller in its class!

New Ford F-500 outsells all other "1 1/2-tonners." Chassis-cab in 130- and 104-in. wheelbases accommodates custom bodies from 7 1/2 to 13 ft. long. Drivized Cabs, V-8 or Six. G.V.W. to 14,000 lbs.

### Light duty truck with a heavy duty heart!

Ford's new F-250 Stake-Platform gives you over 7 1/2-ft. length by 6-ft. width to handle bulky loads. G.V.W. 6,900 lbs. Drivized Cab! Choice of Cost Clipper Six or Truck V-8.

### Biggest seller in its class!

New Ford F-500 outsells all other "1 1/2-tonners." Chassis-cab in 130- and 104-in. wheelbases accommodates custom bodies from 7 1/2 to 13 ft. long. Drivized Cabs, V-8 or Six. G.V.W. to 14,000 lbs.

### Light duty truck with a heavy duty heart!

Ford's new F-250 Stake-Platform gives you over 7 1/2-ft. length by 6-ft. width to handle bulky loads. G.V.W. 6,900 lbs. Drivized Cab! Choice of Cost Clipper Six or Truck V-8.

### Biggest seller in its class!

New Ford F-500 outsells all other "1 1/2-tonners." Chassis-cab in 130- and 104-in. wheelbases accommodates custom bodies from 7 1/2 to 13 ft. long. Drivized Cabs, V-8 or Six. G.V.W. to 14,000 lbs.

### Light duty truck with a heavy duty heart!

Ford's new F-250 Stake-Platform gives you over 7 1/2-ft. length by 6-ft. width to handle bulky loads. G.V.W. 6,900 lbs. Drivized Cab! Choice of Cost Clipper Six or Truck V-8.

### Biggest seller in its class!

New Ford F-500 outsells all other "1 1/2-tonners." Chassis-cab in 130- and 104-in. wheelbases accommodates custom bodies from 7 1/2 to 13 ft. long. Drivized Cabs, V-8 or Six. G.V.W. to 14,000 lbs.

### Light duty truck with a heavy duty heart!

Ford's new F-250 Stake-Platform gives you over 7 1/2-ft. length by 6-ft. width to handle bulky loads. G.V.W. 6,900 lbs. Drivized Cab! Choice of Cost Clipper Six or Truck V-8.

### Biggest seller in its class!

New Ford F-500 outsells all other "1 1/2-tonners." Chassis-cab in 130- and 104-in. wheelbases accommodates custom bodies from 7 1/2 to 13 ft. long. Drivized Cabs, V-8 or Six. G.V.W. to 14,000 lbs.

### Light duty truck with a heavy duty heart!

Ford's new F-250 Stake-Platform gives you over 7 1/2-ft. length by 6-ft. width to handle bulky loads. G.V.W. 6,900 lbs. Drivized Cab! Choice of Cost Clipper Six or Truck V-8.

### Biggest seller in its class!

New Ford F-500 outsells all other "1 1/2-tonners." Chassis-cab in 130- and 104-in. wheelbases accommodates custom bodies from 7 1/2 to 13 ft. long. Drivized Cabs, V-8 or Six. G.V.W. to 14,000 lbs.

### Light duty truck with a heavy duty heart!

Ford's new F-250 Stake-Platform gives you over 7 1/2-ft. length by 6-ft. width to handle bulky loads. G.V.W. 6,900 lbs. Drivized Cab! Choice of Cost Clipper Six or Truck V-8.

### Biggest seller in its class!

New Ford F-500 outsells all other "1 1/2-tonners." Chassis-cab in 130- and 104-in. wheelbases accommodates custom bodies from 7 1/2 to 13 ft. long. Drivized Cabs, V-8 or Six. G.V.W. to 14,000 lbs.

### Light duty truck with a heavy duty heart!

Ford's new F-250 Stake-Platform gives you over 7 1/2-ft. length by 6-ft. width to handle bulky loads. G.V.W. 6,900 lbs. Drivized Cab! Choice of Cost Clipper Six or Truck V-8.

### Biggest seller in its class!

New Ford F-500 outsells all other "1 1/2-tonners." Chassis-cab in 130- and 104-in. wheelbases accommodates custom bodies from 7 1/2 to 13 ft. long. Drivized Cabs, V-8 or Six. G.V.W. to 14,000 lbs.

### Light duty truck with a heavy duty heart!

Ford's new F-250 Stake-Platform gives you over 7 1/2-ft. length by 6-ft. width to handle bulky loads. G.V.W. 6,900 lbs. Drivized Cab! Choice of Cost Clipper Six or Truck V-8.

### Biggest seller in its class!

New Ford F-500 outsells all other "1 1/2-tonners." Chassis-cab in 130- and 104-in. wheelbases accommodates custom bodies from 7 1/2 to 13 ft. long. Drivized Cabs, V-8 or Six. G.V.W. to 14,000 lbs.

### Light duty truck with a heavy duty heart!

Ford's new F-250 Stake-Platform gives you over 7 1/2-ft. length by 6-ft. width to handle bulky loads. G.V.W. 6,900 lbs. Drivized Cab! Choice of Cost Clipper Six or Truck V-8.

### Biggest seller in its class!

New Ford F-500 outsells all other "1 1/2-tonners." Chassis-cab in 130- and 104-in. wheelbases accommodates custom bodies from 7 1/2 to 13 ft. long. Drivized Cabs, V-8 or Six. G.V.W. to 14,000 lbs.

### Light duty truck with a heavy duty heart!

Ford's new F-250 Stake-Platform gives you over 7 1/2-ft. length by 6-ft. width to handle bulky loads. G.V.W. 6,900 lbs. Drivized Cab! Choice of Cost Clipper Six or Truck V-8.

### Biggest seller in its class!

New Ford F-500 outsells all other "1 1/2-tonners." Chassis-cab in 130- and 104-in. wheelbases accommodates custom bodies from 7 1/2 to 13 ft. long. Drivized Cabs, V-8 or Six. G.V.W. to 14,000 lbs.

### Light duty truck with a heavy duty heart!

Ford's new F-250 Stake-Platform gives you over 7 1/2-ft. length by 6-ft. width to handle bulky loads. G.V.W. 6,900 lbs. Drivized Cab! Choice of Cost Clipper Six or Truck V-8.

### Biggest seller in its class!

New Ford F-500 outsells all other "1 1/2-tonners." Chassis-cab in 130- and 104-in. wheelbases accommodates custom bodies from 7 1/2 to 13 ft. long. Drivized Cabs, V-8 or Six. G.V.W. to 14,000 lbs.

### Light duty truck with a heavy duty heart!

Ford's new F-250 Stake-Platform gives you over 7 1/2-ft. length by 6-ft. width to handle bulky loads. G.V.W. 6,900 lbs. Drivized Cab! Choice of Cost Clipper Six or Truck V-8.

### Biggest seller in its class!

New Ford F-500 outsells all other "1 1/2-tonners." Chassis-cab in 130- and 104-in. wheelbases accommodates custom bodies from 7 1/2 to 13 ft. long. Drivized Cabs, V-8 or Six. G.V.W. to 14,000 lbs.

### Light duty truck with a heavy duty heart!

Ford's new F-250 Stake-Platform gives you over 7 1/2-ft. length by 6-ft. width to handle bulky loads. G.V.W. 6,900 lbs. Drivized Cab! Choice of Cost Clipper Six or Truck V-8.

### Biggest seller in its class!

New Ford F-500 outsells all other "1 1/2-tonners." Chassis-cab in 130- and 104-in. wheelbases accommodates custom bodies from 7 1/2 to 13 ft. long. Drivized Cabs, V-8 or Six. G.V.W. to 14,000 lbs.

### Light duty truck with a heavy duty heart!

Ford's new F-250 Stake-Platform gives you over 7 1/2-ft. length by 6-ft. width to handle bulky loads. G.V.W. 6,900 lbs. Drivized Cab! Choice of Cost Clipper Six or Truck V-8.

### Biggest seller in its class!

New Ford F-500 outsells all other "1 1/2-tonners." Chassis-cab in 130- and 104-in. wheelbases accommodates custom bodies from 7 1/2 to 13 ft. long. Drivized Cabs, V-8 or Six. G.V.W. to 14,000 lbs.

### Light duty truck with a heavy duty heart!

Ford's new F-250 Stake-Platform gives you over 7 1/2-ft. length by 6-ft. width to handle bulky loads. G.V.W. 6,900 lbs. Drivized Cab! Choice of Cost Clipper Six or Truck V-8.

### Biggest seller in its class!

New Ford F-500 outsells all other "1 1/2-tonners." Chassis-cab in 130- and 104-in. wheelbases accommodates custom bodies from 7 1/2 to 13 ft. long. Drivized Cabs, V-8 or Six. G.V.W. to 14,000 lbs.

### Light duty truck with a heavy duty heart!

Ford's new F-250 Stake-Platform gives you over 7 1/2-ft. length by 6-ft. width to handle bulky loads. G.V.W. 6,900 lbs. Drivized Cab! Choice of Cost Clipper Six or Truck V-8.

### Biggest seller in its class!

New Ford F-500 outsells all other "1 1/2-tonners." Chassis-cab in 130- and 104-in. wheelbases accommodates custom bodies from 7 1/2 to 13 ft. long. Drivized Cabs, V-8 or Six. G.V.W. to 14,000 lbs.

### Light duty truck with a heavy duty heart!

Ford's new F-250 Stake-Platform gives you over 7 1/2-ft. length by 6-ft. width to handle bulky loads. G.V.W. 6,90



# GIRLS ENTERTAIN AT PLAY DAY

Eighth Graders Of Passaic Avenue School Entertain Girls Of School Nos. 1, 9, 10

The eighth grade girls of Passaic Avenue School, entertained 24 girls from School Nos. 1, 9, and 10 at a play day on Monday, October 26th. Miss Margaret Leahy, supervisor of physical education and Mrs. Ruth Bruce were teacher advisors.

Lucille Fazio, general chairman, was assisted by Marie Volk, refreshment chairman; Patricia Maucione, decorating chairman; Catherine Chieffo, games chairman. Hostesses were Anita Skirbner, Phyllis Puglia, and Isabel Pinacchella.

The refreshment committee included Barbara Cofone, Jean Dick, Rose Giordano, Elizabeth Pennamano, Mary Jo Renna, Diane Spens, Betty Chown, Catherine Lia, Vivian Pintozzi, Joyce Raphael, Lorraine Robjohns, and Josephine Scarapelli.

The decorating committee who also designed the invitations and pinnies for the players were Joan Watters, Marjorie Giangrosso, Marilyn Torronese, and Isabel Pinacchella. Nancy Burnley made the chrysanthemum corsages for the guests.

Volley ball was refereed by Grace Bonifant with Rose Marie Scarapelli as score keeper. Baseball was umpired by Rita Oliverio with Marie Bruno as score keeper. The players from Passaic Avenue School were Joyce Dunn, Patricia Beniek, Mary Ann Biondi, Mary Ann Biondi, Catherine Chieffo, Patricia Maucione, Joan Watters and Lucy Eucavaria.

The guests from School One were Joan Biondi, Veronica Sudzick, Linda Garcia, Marlene DeBelle, from School Nine were Grace Ferrigno, Joan Kasinski, Lillian Halliwell, Jean Kasinski, Arlene Belsin, and Doris Estelle; from School Nine were Grace Ferrigno, Joan Kasinski, Lillian Halliwell, Jean Kasinski, Arlene Belsin, and Doris Estelle; from School Nine were Grace Ferrigno, Joan Kasinski, Lillian Halliwell, Jean Kasinski, Arlene Belsin, and Doris Estelle.

This is one of eight such units planned each year by Miss Leahy.

# Vocational Talk Given To Belleville Senior Girls

The guidance department of Belleville High School under Samuel Shiffen, had arranged a vocational talk which was given to its senior girls on Wednesday, October 28, at 2:30 p.m. The talk entitled "Look Before You Jump—Into a Career" was delivered by Mrs. Elythe W. Chiovare, guidance counselor at the Berkeley School of Secretarial Training, East Orange.

The talk covered topics such as "realistic approach to a vocation; dangers to guard against in a career start; importance of the first job; prospects in various fields such as radio-TV, personnel administration, air transportation, publishing, advertising, public relations, fashion, etc.; widespread need for private secretaries; value of any career of dependable training."

After her talk, Mrs. Chiovare was available for questions from students who desire specific counsel on some personal problem or advice on a secretarial career.

# Job Placement Bureau For Students Of High School

The Belleville High School Guidance Department runs a Job Placement Bureau for the high school students. Local employers wishing to obtain part-time workers may contact the high school.

In the spring several local employers contact the school to obtain the services of seniors after graduation.

Graduates who may be unemployed may also register with the placement bureau for jobs. Many employers, anticipating a tight labor market, are hiring seniors on a part-time basis. Employers may call PL 9-4701 if they wish to place job orders.

# New Arrivals

"New arrivals" is a new arrival to our newspaper and will be found each week. We invite you to send in any such news you may have to help us make this article as interesting as possible.

Mr. and Mrs. Robert Henderson, formerly of Belleville, son of Mrs. Mary E. Henderson, Schmidt 136 Rutgers Street, gave birth Saturday at Presbyterian Hospital to a daughter, Patricia Ann.

Mr. and Mrs. Stafford C. Foster of 50 Branchbrook Road, became the parents of Michael Steven, on November 1, at the Orange Hospital Center, Orange.

A son, Anthony, was born to Mr. and Mrs. Michael Bravio of 83 West Market Street, on November 1, at St. Mary's Hospital, Orange. Mrs. Bravio is the former Josephine Rinaldi, of Belleville.

# High School PTA Members At New Jersey Convention

The Fifty-third Annual State Convention of the New Jersey Congress of Parent and Teachers was held at Atlantic City on October 28, 29 and 30. The convention platform was "The Three R's in the Community—Rights, Responsibilities and Rewards." Emphasis was given to the belief that to creditably fulfill our obligations, we need first to familiarize ourselves with the rights we enjoy as citizens under the Constitution.

The following high school PTA members attended: Mrs. Howard Shay, voting delegate; Mrs. A. G. Love, alternate for President Arthur Blonke; Mrs. Arthur Price, Mrs. Harold Arvidson and Mrs. Maurice McElligot.

# Five Freshmen Entering Seton Hall This Fall

Enrolled this fall at Seton-Hall University are: Joseph E. Illari of 24 Franklin Street, who graduated from Belleville High School and served in the Army. He is majoring in Chemistry.

James A. Leonard of 26 Bridge Street, a graduate of St. Benedict's Preparatory School who is majoring in Communication Arts. Alphonse Paradise of 499 Franklin Avenue, also a graduate of Belleville High where he was a member of the Leaders Club and Assembly Committee, and played javay basketball. He is majoring in Business Administration. Vincent J. Brown of 19 Meritt Avenue, a graduate of Queen of Peace High School, a Chemistry major. Paul H. Malague of 6 De Witt Avenue, a graduate of St. Benedict's Preparatory School and a veteran of the Army Medical Corps.

# Kilmer Society Holds Its First Symposium Of Year

John Cross, 40 Crescent Terrace, is vice president of the Kilmer Society of St. Peter's College, Jersey City, which held its first symposium of the year on October 30, in McDermott Hall. Fordham students were invited to discuss with St. Peter's men the merits of Ernest Hemingway, author, Rev. Victor Yantelli, S.J., of the Department of Romance Languages, Fordham was the moderator. Refreshments and dancing followed.

The Society has planned for its future symposia discussions on Francisco Mauriac, Eugene O'Neill, The American War Novel, and Modern Poetry.

# Wed In Double Ring Ceremony

At a double-ring ceremony, last Sunday in St. Peter's Church, Miss Louise Santiglia, daughter of Mr. and Mrs. Joseph Santiglia of 450 Belleville Avenue, was married to Charles Cerami, Jr., son of Mrs. Charles Cerami of 9 Hilton Street, and the late Mr. Cerami. Rev. John Hourihan performed the ceremony. A reception followed at the Hotel Essex House, Newark.

Miss Joanne Trignano was maid of honor. Bridesmaids were Mrs. Rose Angelo, sister of the bride, Miss Mary Cerami, sister of the groom, Miss Barbara Cudia, cousin of the bride and Miss Elizabeth Afrifolio. Mr. Leslie Del Tufo served as best man and William Angelo, Rocco Cerami, Charles Cerami, and Joseph Cancelliere served as ushers.

The bride wore a gown of chintilly lace and pleated nylon tulle over satin. Her silk illusion veil was held by a crown of seed pearls and rhinestones. She carried a bouquet of orchids on a prayer book.

Mrs. Cerami is employed by the Combustion Installations. Mrs. Cerami is proprietor of the Belleville Live Poultry Market.

After a trip to Florida the couple will reside at 584 Centre Street, Nutley.

# Helen V. Davis Circle

The regular meeting of the Helen V. Davis Circle of Grace Baptist Church will be held on Monday evening, at the church.

Mrs. Jeannette Russell will present a program on "Our Thankfulness." Mrs. Eudora Parry and Mrs. Gladys Hall will serve as hostesses at the evening.

# Strong Start For Fewsmitth Every Member Canvass

The Every Member Canvass at Fewsmitth Memorial Presbyterian Church got off to a strong start last Sunday morning at the Loyalty Day Morning Worship.

Samuel L. Shaw, chairman of the committee presented the proposed budget for next year and pointed out the increased needs, emphasizing youth work and the Church School. Pledges were received and the canvassers were consecrated by the pastor, Dr. James K. Morse.

Werner Tietze, chairman of the Canvassers, instructed the teams and gave them their assignments at the church at 2 o'clock. Area captains are: Edward Albright, John Rudge, Charles Hill, Werner Tietze, Robert Peppel, David Jenkins, William Maser, Harold Ross, Sr., and Wesley Decker. Some teams have already reported their calls just about completed.

The final reports will be made this Sunday evening.

# Indoor Sports Bazaar

The Montclair Chapter of Indoor Sports will hold a bazaar on Tuesday at the First Methodist Church, Montclair. Admission is free and everyone is invited. Music, refreshments and games will be available.

Members of the organization from Belleville are: A. Roberts, J. McGarry, T. Leo, and B. Wilkinson.

# Early November Bride



Mrs. Edward Arthur Benjamin

Miss Joan Catherine McCough, daughter of Mr. and Mrs. Matthew J. McCough of 202 Linden Avenue, and Mr. Edward Arthur Benjamin, son of Mrs. Arthur S. Benjamin, were married Saturday by Rev. John Gohling at a nuptial Mass at St. Mary's Church, Nutley. A reception followed at the Franklin Casino.

Mrs. William Gukas of Belleville was marten of honor. Mr. Robert Christian of Bloomfield served as best man. The ushers were Mr. Frederick Waliser also of Bloomfield and Mr. Edward Huyler of Belleville.

The bride's sister, Joan was fashioned with a gown of Alecon lace with a full court train. Her three tier finger tip veil was arranged from an Alecon lace cap. She carried an orchid on a prayer book.

After a motor trip through Canaan, the couple will reside in Newark.

# HUGE RALLY WILL CONCLUDE MISSION

5,000 Expected To Hear Bishop Oxnem Speak On "After Decision What?"

Members of the congregation of Wesley Methodist Church will conclude the week of their United Evangelistic Mission by attending a huge Victory Rally on Sunday evening. The rally will begin at 7:30 p.m. and will be held in the Teaneck Armory.

It is expected that 5,000 persons will gather in the armory to hear Bishop O. Brown speak on the subject "After Decision What?" Bishop Oxnem, who formerly was the titular head of the New York Area of Methodism, is now the resident bishop of the Washington, D. C. Area.

Arrangements for the rally have been in the hands of the Board of Lay Activities. At midnight on Saturday a corps of 150 laymen will enter the armory and prepare for the meeting which is to take place on Sunday evening. Choirs of churches throughout northern New Jersey will send 800 voices to sing the special music for the occasion.

At 7:30 p.m. the United Methodist Choir of Wesley Church will be among this number.

Members of the Young Adult Fellowship of Wesley Church will arrive at Teaneck several hours prior to the time of the rally to attend a Rally Supper meeting which has been planned by the Conference Council of Young Adults. Other members of the local congregation will meet at the church in Belleville at 6:45 p.m. to coordinate transportation to and from the place of the rally.

At the regular morning worship service, conducted at 11 o'clock, the pastor of the church, Rev. Clifford A. Hewitt, will preach the topic "Getting a New Lease on Life." At that time, also, current results of the United Evangelistic Mission in this community will be announced.

School No. 10 P.T.A. Had Special Program Last Night

The Belleville School No. Ten P.T.A. meeting was held last evening, at eight o'clock. Since this is American Education Week, a special program was held.

The parents visited the various classrooms, and Mrs. Minnie, Principal of No. 10 School, explained the new Report Cards, the Parent-Teacher Conferences, and the testing program which is being conducted.

Mrs. M. Stefanelli, Chairman of the Ways and Means Committee, reported proceeds for the cake sale amounting to \$125.75.

"Packages for Korea" have been collected and sent to the Red Cross by Mr. H. Hanson.

Refreshments were served by the mothers of the two second grades.

# Independent Voters Dance Has Sadie Hawkins Theme

Tomorrow night marks the second in the series of dances being sponsored by the Independent Voters League of Belleville at the American Legion Hall, 621 Washington Avenue, Belleville.

This dance is based on the Sadie Hawkins Day theme and sponsors of this occasion will be passed out to the guests to help celebrate the evening. From the attendance of the last dance, the League expects a banner attendance for this novel type of affair.

# Mr. & Mrs. Joseph H. Horter Celebrate Golden Wedding

Mr. and Mrs. Joseph H. Horter Sr., of 407 De Witt Avenue, celebrated their golden wedding anniversary yesterday. They were honor guests at a dinner given last evening at Pal's Cabin by their son-in-law and daughter, Mr. and Mrs. R. L. Marchese of West Caldwell, and their sons and daughters-in-law, Mr. and Mrs. Joseph H. Horter, Jr., of Alexandria, Va., and Mr. and Mrs. Albert Horter of West Orange. The couple also have two granddaughters and one great-grandson.

Mr. and Mrs. Horter were married in St. John's Lutheran Church, Newark, November 10, 1903, by the late Rev. William Rieb, pastor. Mrs. Horter is the daughter of Miss Marie Koehler of New York. Her husband is a native Newarker. The couple reside 26 years in East Orange. They have made their home at the Belleville address for 24 years.

# OPEN HOUSE AT SCHOOL NO. 8 P.T.A.

Parents, Friends Invited To Attend Classes Of The Children To See Their Work

Open House will be held for all members and friends of the School No. 8 P.T.A. on Monday evening, beginning at about 7:45 p.m. Parents and friends are cordially invited to attend the classes of their children to see their work and to hear the goals, plans, and suggestions of the classroom-teachers. Since this will be National Education Week, it is hoped that as many parents as possible will visit the school on Monday evening.

A very short-business meeting will follow. Refreshments will be served by the mothers of the two eighth grades and one seventh grade, under the direction of the Classroom Mothers and the Refreshment Committee. They are Mrs. Bruce LaMura, Mrs. Patrick Lannelli, Mrs. J. Oughton, Mrs. Andrew Lukowiak, Mrs. N. Tangredi, Mrs. James Condon, and Mrs. Michael Rounstin. Mrs. Bruce LaMura will serve as co-chairman of the Refreshment Committee in place of Mrs. John Bender. Mrs. Alex M. Gilchrist is president of the organization.

# National Children's Book Week Starts This Monday

The Junior Department of the Belleville Public Library is celebrating National Children's Book Week, from November 15th through November 21st. The slogan this year is "Reading is Fun."

Many splendid books are being prepared for the enjoyment of the members of the Junior Department. Exciting stories for every age and grade.

An invitation is extended to parents, teachers and all Junior members to visit with the Library during Book Week, and have fun with books.

# CHRIST CHURCH TO HOLD BAZAAR

Turkey Dinner Will Be Served Tuesday; Various Tables And Booths Are Assigned

Mrs. George Schmeltz and Mr. Gordon Britland have been selected to act as co-chairmen for Christ Church Fall Dinner and Bazaar which will be held at the Parish House on Tues., Nov. 17th. Mrs. J. Harry Edwards is the treasurer. A turkey dinner will be served from 5 o'clock under the chairmanship of Mrs. Kenneth D. Smith. Tickets for the dinner are in charge of Mrs. George C. Miller and Mrs. James Miller. Mrs. Joseph E. Zopf, Mrs. Charles T. Buknusz and Mrs. Harry Bennett are the dinner hostesses. Mr. and Mrs. Richard G. Taggart of the Couples Club will serve dough-nuts and cider during the day.

The Ladies Guild will have the Gift Table with Mrs. George Hilbrand in charge. — The White Elephant Table with Mrs. Fred Williams and Mrs. Thomas Greaves, — and Mrs. Daniel Hyde and Mrs. George DeKarse will care for the Food Table.

The Altar Guild is sponsoring Handkerchiefs for Mrs. David I. Boyd and Mrs. F. Ganteau, and Mrs. Harry Edwards will have charge of cards and wrappings. Mr. Harry Bennett with the children of the Church School are having a Miscellaneous Table. Mrs. Florence Smith is in charge of Kitchen Supplies, including many moderately priced articles for kitchen use.

Members of the Evening Guild are in charge of the following booths: — Baby Table — Mrs. Leonard M. Ward and Mrs. William J. Jeffers. Dolls — Mrs. Kenneth F. Mass and Mrs. Fred L. Flohn. Aprons — Mrs. Richard G. Breckinridge.

Annual Halloween Assembly Held At No. One School

The kindergarten to the fourth grades, inclusive, participated in the annual Halloween Assembly at No. One School on October 30. As is the custom, all the children were in costume, many posing in typical Halloween fashion, others displaying unique and clever costumes.

Costume contests were sent from each class to parade through a wooden frame made by the children. Three teachers acted as judges and prizes were awarded to the following winners: Prettiest: Patricia Biondi and Phyllis Cerrito. Most Unique: Robert Haley and Marie Brubaker. Scariest: Jane Hubbard and Carl Mickens. Funniest: Dennis Wilkes and Carol Debrovski.

After the assembly, each class retired to their rooms for a gala Halloween party. At recess time all the children paraded around the school grounds in their costumes.

# EDUCATION WEEK COMMEMORATION

Assembly Program At The James G. Shawyer School Held On Wednesday Night

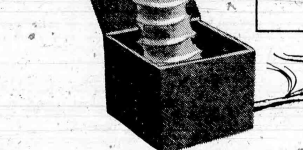
American Education Week was commemorated in James G. Shawyer School on Wednesday, November 11 by an assembly program whose theme was: "The Importance of Our Democratic Life."

Under the direction of Mrs. Mayne Martinelli, Mrs. Viola Spray and Miss Margaret Vance the seventh and eighth grades presented a tableau of important events in American history to emphasize the fact that many races and religious creeds make up our American way of life.

The children discussed what each child can do toward strengthening the Democratic way of life and resolved to follow the school creed and honor God, who leads our path through life.

Among the songs the students sang were: Sky Blue Water, Over the Bounding Main, Faith of Our Fathers, Yankee Doodle, Battle Hymn of the Republic, Over There, and Keep the Home Fires Burning.

# CHRISTMAS CLUBS ARE NOW OPEN



A Christmas Club Check Gives You Money When You Need Money

It Is The Easiest Way To Provide Funds With Which To Pay . . .

| Plan Now   | To Meet Next Year's Demands By Joining One Of These Clubs: |
|--|--|
| Members paying \$1.00 a week for Fifty Weeks will receive . . .  | \$ 50.00   |
| Members paying \$2.00 a week for Fifty Weeks will receive . . .  | \$100.00   |
| Members paying \$3.00 a week for Fifty Weeks will receive . . .  | \$150.00   |
| Members paying \$5.00 a week for Fifty Weeks will receive . . .  | \$250.00   |
| Members paying \$10.00 a week for Fifty Weeks will receive . . . | \$500.00   |

# INTEREST PAID ON SAVINGS ACCOUNTS AT 2%

PEOPLES NATIONAL BANK AND TRUST COMPANY

237 WASHINGTON AVENUE

BELLEVILLE, NEW JERSEY

Parking for Customers Adjoins the Bank Building

At the spring several local employers contact the school to obtain the services of seniors after graduation.

# CHRISTMAS CLUBS ARE NOW OPEN

A Christmas Club Check Gives You Money When You Need Money

It Is The Easiest Way To Provide Funds With Which To Pay . . .

| Plan Now   | To Meet Next Year's Demands By Joining One Of These Clubs: |
|--|--|
| Members paying \$1.00 a week for Fifty Weeks will receive . . .  | \$ 50.00   |
| Members paying \$2.00 a week for Fifty Weeks will receive . . .  | \$100.00   |
| Members paying \$3.00 a week for Fifty Weeks will receive . . .  | \$150.00   |
| Members paying \$5.00 a week for Fifty Weeks will receive . . .  | \$250.00   |
| Members paying \$10.00 a week for Fifty Weeks will receive . . . | \$500.00   |

# INTEREST PAID ON SAVINGS ACCOUNTS AT 2%

PEOPLES NATIONAL BANK AND TRUST COMPANY

237 WASHINGTON AVENUE

BELLEVILLE, NEW JERSEY

Parking for Customers Adjoins the Bank Building





# SPOTLIGHT on SPORTS



By Bob Gorlin

A Football Comparison

In recent years there is a very popular football question that is discussed by the scholastic grid fans about this time of year but always goes unanswered.

How does Memorial High School, of West New York, stack up against the better teams in Essex County?

Originally I must admit that I was a little partial favoring the Mems of Hudson County. That slight partiality was caused by the fact that I originally resided in Jersey City and naturally leaned more to Coach Joe Coviello and his juggernaut outfits.

Until this year the natural comparison was always made between Montclair and Memorial, but East Orange spoiled that discussion several weeks ago. Since leaving Haguerville, however, I never fail to witness the top attraction in Hudson County. Lately it's been a meeting between Memorial and St. Peter's.

Sunday the two top squads from the other side of the Hackensack met head on in spacious Roosevelt Stadium in Jersey City before 13,000 fans. I was one of them.

Memorial defeated St. Peter's, 20-6, but I wasn't particularly impressed with what I saw. Sure Memorial remained undefeated. However, this fall I can't see the Mems taking over Orange or East Orange. Coach Ed Berlinski will get a good look at the Tornadoes in Municipal Stadium on Thanksgiving Day. Coviello had a big forward wall. He is a perfectionist with most emphasis on power plays. The Mems aren't known for razzle-dazzle or fancy set-ups. This St. Peter's team was the same outfit that snapped Memorial's 31-game winning streak in 1952.

The annual puts out a good team. He is seeking his fifth undefeated season since coming to West New York from Berwick, Pennsylvania in 1946, and the chances are that he will succeed. Even with those fabulous records, however, it has been hard for the Mems to be recognized as the top team in the state, the reason being simple. They don't play a tough enough schedule in New Jersey. Located in Hudson County and playing in the Hudson grid league has hampered their championship chances. The Hudson brand of ball is way below par when compared with the grid sport here in Essex.

Scheduling is a major problem in high school circles. Memorial has to go to New York City to play its next two games. I don't know what negotiations have taken place concerning Essex County schools, but a regular game against one or two of the top teams would be a natural and would pack the fans in like sardines. Montclair and Memorial get together every year in a pre-season scrimmage session, why not later in the season, in their September scrimmage? The Mems scored seven TD's to the Mounties' one, but Memorial was laying for Aubrey Lewis and Co. that afternoon and poured it on. Supposedly a closed affair, the reporters and fans were out in full force to see the two titans battle it out.

One fact can now be generally agreed. The fans will turn out for a good high school contest in spite of television. Thirteen thousand witnessed the Mem-Petean fracas and 11,000 jammed Martens Stadium in East Orange two weeks earlier to see the Panthers upset Montclair. When East Orange and Orange meet a week from Saturday another capacity crowd is virtually assured.

Crystal Gazing  
 Old man upset was in rare form Monday as the scholastic grid teams, after being snowed out Saturday, went at it, but good Monday afternoon. East Side upset undefeated Barringer, Clifford Scott knocked off unbeaten Verona, Columbia pinned one on New Brunswick, Kearny surprised Belleville and Weequahic came to life against West Side. The less said about last week's predictions, the better.

When it comes to trying to figure Saturday afternoon whiffers, you figure it out, I can't. Those who consult with the solution will be awarded a hand painted crystal ball with built in ouija board.

Nutley to upset Bloomfield. The Maroon Raiders proved to Coach Jack Lewis that they want to play ball. They lost to Barringer, unbeaten Clifton and came within a hair's breadth of upsetting the Mustang apocryph. I look for the Nutley aggregation to play another scrappy game, but this time the Maroon Raiders will go all the way to victory.

Montclair to rudely awaken Clifton. For the third successive year Clifton will enter the Montclair fracas undefeated and for the third successive year the Mustangs will come out second best. After struggling to edge Nutley, Clifton won't be in good shape for the Mounties.

East Orange to shell Columbia. The expected donkey-brook between East Orange and Orange never came off as snow put off the battle until November 21. Saturday Coach Bob Redmond will once again have an excellent opportunity to give his underclassmen game experience as he looks ahead to the Tornado tussle.

East Side to trim West Side, all around the town. In a Newark City contest I like the East Siders. Barringer took it on the chin against East Side in a stunning upset Monday.

West Orange to down Westfield. Look for the Cowboys to bounce back after dropping an outing to Montclair.

Phillipsburg to upset Barringer. The Big Blue may be strong in City League circles, but I think they may be biting off a little more than they can chew when they travel to Phillipsburg. The P-burgers can always be counted on to field a potent squad. They may not be undefeated, but the West Jersey outfit plays the toughest from the neighboring Pennsylvania area.

Kearny to handle Central. Both teams have been playing unpredictable fall this fall. For this tussle Kearny to be ready to overtake the Highstreeters. They looked good in a 21-7 route over Belleville.

Orange to whip Morrisstown. Only an opening game loss to Montclair mare the Tornado record. Orange all the way as they chalk up victory No. six.

Union to wallop Weequahic. The Indians have been talking their lungs. Union should encounter little trouble in the inter-county rivalry.

Jefferson to route South Side. The South Siders are still looking for that elusive first victory. It's still nowhere in sight.

Paths Cross Unexpectedly



Two former Belleville men met with our local Fire Chief, unexpectedly, while attending the Conference of International Fire Chiefs, held in the Royal York hotel, Toronto, Canada. From left to right: R. Daly, with Prudential Life Insurance in Toronto; William E. Dunleavy, Chief of the Belleville Fire Department; Boyd A. Hartley, with the National Board of Fire Underwriters.

Blue And Gold Succumbs 21-7 In Kearny Meeting

Cardinals Capitalize On Bellboys' Mistakes; Final Surge Turns Away Shutout; Last Foe Will Be Orange

By Eugene Serpentelli

In a game originally scheduled for last Saturday, the Blue and Gold of Belleville absorbed their second defeat of the season at the hands of Kearny at the Kearny High School stadium, Monday.

The game's first score came midway in the first quarter, as Kearny pushed from the Belleville 35 to the 4 yard line, where Jim Webster skirted end for the touchdown. The extra point was added by Phil Krulik.

The next touchdown came when a quick kick by Webster touched Belleville's Rocco Cafone, who was waiting for the ball to roll dead and an alert Kearny defenseman fell on it at the Belleville 30. After a series of rushes which brought the ball to the 10, Webster again dashed over for the score. The placement by Krulik was good and Kearny led 14-0.

Early in the fourth quarter, Webster crashed through the center of the Belleville line on a sparkling 40 yard run to mark the third tally. Krulik, in making the extra point sustained a 1,000 average for the day and brought the score to 21-0. Krulik is an excellent place-kicker, witnessed by the fact that in the fourth quarter he attempted a 35 yard field goal, something you do

not often see in high school ball.

Near the end of the game the Bellboys scored their lone touchdown on a series of rushes, a 30 yard pass play with Larry D'Onofrio on the receiving end, and a short plunge by Bob Paganelli, formerly of the Belleville line.

If Monday's game was an example of the tone of Kearny's play, it is hard to understand why they do not have a better record. They have a hard charging line and two bruising backs, in Webster and Bill Morrison. The latter is 6 ft.

4 in., 200 pounds and is only a

Belleville, on the other hand, played loosely, continuously making errors which the Cardinals capitalized on. The Blue and Gold now have two weeks to iron out their weaknesses and lay up for the Orange "Turkey Day" game.

SENIOR LEAGUE BASKETBALL ON

Recreation Department Initiates League Opening; Roy's Repeat Bruin Defeat

Last Monday the Recreation Department Senior Basketball League got under way with six teams in action. One scheduled game involving A-Battery 98 was postponed.

The first point of the season was made by Smith of Straits when he sank a foul shot in their game with Bart-Massing. Although the game was tied up at the half, Harts went on to win by a 48-42 margin. Littera was high scorer for Baris, collecting 25 points. For Straits it was O'Hara with 16 points.

Last years Champions, the Tortorella A-C, exhibited their championship form in defeating a very good Jesters team by a 48-40 score. McConnell accounted for 21 of the Tortorella's points. Engle of the Jesters poured in 13 points.

In the last game played, the Bruins were picked against Roy's Sport Shop. These two teams played off last year for the Intermediate League Championship with Roy's Sport Shop emerging the winner. Last Monday, playing in the Senior League, history repeated itself and Roy's dealt out a 49-37 defeat to the Bruins. Terrieri and Maturati of the Bruins and Mack and Pettit of Roy's Sport Shop split high-scoring honors four ways, each accounting for 11 points. These two teams, young, and fast, will create plenty of havoc in the Senior League this year.

On this coming Monday, there will be four excellent games played in the Senior League at the Belleville High School starting at 7:30 p.m. The Jesters will tangle with the Wildcats, Roy's Sport Shop will get their first real Senior League test when they meet the Straits, the Bruins will be shooting for their first victory against A. Battery 98, and Bart-Massing will be out to test the metal of the Tortorellas. The Intermediate League will go into play on November 18, at the high school, starting at 7:30 p.m.

Sixth Graders Make Trip To New York With Teachers

On October 29, 1953, the sixth graders, under the leadership of their teachers, Miss Claire Boland and Mrs. Augusta M. Klein, made a trip to New York. The

classes spent the morning at the American Museum of Natural History where they visited exhibits of prehistoric mammals and the Indians. The afternoon was spent at the Metropolitan Museum of Art where the children visited exhibits of Ancient Egypt and Ancient Greece. On the return home the bus made a stop at Central Park Zoo where the children spent a very enjoyable hour.

Short Assembly Program At Annual Parent's Night

The Annual Parent's Night of the Essex County Vocational and Technical High School for Girls, 300 North 13th St., Newark, was held on Wednesday evening, November 11th.

The program included a short assembly program in which the parents were greeted by the Principal, Mrs. Salina H. Richardson, and the President of the Essex

County Teachers' Association, Mr. Harry L. Corson. Selections by the school Glee Club and Freshman Chorus were included in the assembly program. The rest of the evening was spent in visits to the classrooms for discussion of the work done in the various courses. The evening closed with a social hour in the school's gymnasium at which refreshments were served.

OUR CLASSIFIED SECTION BRINGS QUICK RESULTS



"See what my first pay check bought?"

IT'S A LOT EASIER to have the extras you want when you have a good paying job. And at the telephone company the pay is good —right from the start. And you're assured four raises in the very first year.

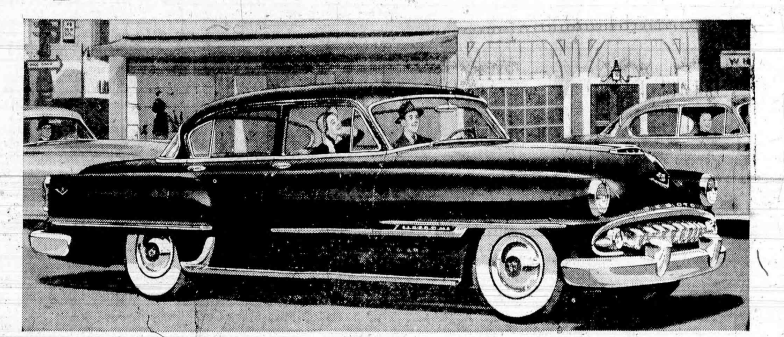
AND HERE'S ANOTHER important feature—you keep more of what you earn. By working near home you save costly commuting expense. And, of course, you save time too—leave home later, get home earlier.

RIGHT NOW there are opportunities for girls—both inexperienced and experienced. Why not see for yourself the many, many advantages of telephone work.

THE WOMEN'S EMPLOYMENT BUREAU at 540 Broad Street, Newark, is open weekdays 9 to 5 and, for your convenience, until 9 on Wednesday and Noon on Saturday. Or if you'd rather—call your Local Chief Operator any time.

NEW JERSEY BELL TELEPHONE COMPANY

Make the beautiful New 1954 DESOTO AUTOMATIC puts you ahead in traffic!



Driving's A Pleasure Again With New PowerFlite Transmission, New Full-Time Power Steering, And The New 170 H. P. Fire Dome V-8 Engine! ON DISPLAY NOW!

## SMARTEST BUY!

# '54 DODGE!

### Keep A Year Ahead In Trade-In Value!



NEW FULLY-AUTOMATIC POWERFLITE DRIVE

—newest, smoothest, most powerful automatic transmission!

NEW FULL-TIME POWER STEERING

—takes all the hard work out of driving—leaves the pleasure in!

NEW STEPPED-UP 150 HP RED RAM V-8 ENGINE

—powered the '54 Dodge that set 196 new AAA performance records!

NEW COLOR-HARMONIZED INTERIORS

—styling that complements the body color you choose!

NEW ELEGANT JACQUARD FABRICS

—used before only in one ultra-expensive car!

Specifications, prices and equipment subject to change without notice

See Your Dodge-Plymouth Dealer!

We're Demonstrating Now!... The car that puts you ahead in traffic because it's capable of carrying out sudden orders swiftly and safely at all speeds! The new 1954 DeSoto Automatic with PowerFlite!

New PowerFlite Transmission! Fully-automatic—no clutch—smooth and silent operation! Permits getaway and split-second response matched by no other! Entirely eliminates the old-time clutch pushing and gear shifting!

New 170 H. P. Fire Dome V-8! Stepped up horsepower for America's most efficient engine means even greater acceleration and power reserve than the record FireDome engine of the past! It's economical, too!

New Full-Time Power Steering! Easiest, safest steering known! Wheels respond faster, all hard work of turning and parking is eliminated! Makes parking easy as dialing a phone.

Power Brakes, too! Assure quick, safe stops with half of the usual pedal pressure! No "jamming down"—no stretch... all strain gone!

Plus New Ensemble Style! Long low body, massive new bumpers and grille... and completely new interior with solid-color mouldings, decorator-matched fabric, exquisite new contrasting-color instrument panel! Come in and inspect a Fire Dome V-8 or Powermaster Six!

DE SOTO Puts You Ahead AUTOMATICALLY! See It! Drive It! You'll Love It!

## BIGELOW MOTORS, INC.

50-64 WASHINGTON AVE., BELLEVILLE, N. J.







# Break Out The Blankets It's A Cold Winter Ahead

## Old Farmer's Almanac Sees Plenty Of Woe, Plenty Of Snow After Picking Last Week's Surprise Storm Right When Weatherman Flopped

If you are one of those who argue that winters aren't as rough as they used to be when you were a boy, just wait and see.

The Old Farmer's Almanac, published this week for the 162nd consecutive year, predicts a winter to end all winter tales. It called the turn last year with its prediction of a "swinkful and heavy timed winter." For the months ahead the Almanac predicts: "A turbulent, erratic winter; many storms of rain, snow and sleet."

In a postscript to its prediction, the Almanac adds:

"The considered opinion of many authorities that winters are growing milder will not be exemplified in the coming winter's weather." Abe Weatherwise, the Almanac's dean of forecasters, sees the winter wind up in a blaze of glory, "the storm of the year" gripping the whole country during the first week in April, 1954.

The Old Farmer's Almanac was still on the presses last week when the sudden storm blew up which spread destruction up and down an unprepared coast which the

windy and boisterous until the January thaw about the 15th. Last week will be bitter cold.

FEBRUARY: Cold continues for one week. Heavy snowstorm expected between the 11th and the 17th. Last two weeks milder but not three first days in a row.

MARCH: First two weeks really bad, blowy and cold, and wet. False signs of Spring for a week after that, then a frigid spell from the 27th to 31st.

APRIL: During the first ten days of April watch out for the storm of the year in rain or snow or both all over the United States.

The weather is never "hot" or "cold" to Abe Weatherwise. His predictions for this month read as follows: "At least one spanking cold storm along the Eastern seaboard during the first two weeks. Mild and fine then for one week. Cold and some snow for the rest of the month."

For the rest of this winter, the Almanac forecasts:

DECEMBER: Raw and dull all month with nothing very exciting or harmful.

JANUARY: First ten days will bring cold storms. Then it will be



**ALEMITE CD-2 CONCENTRATE**

Add it to the Motor Oil for Cars, Trucks, Tractors

Just one can... gives you a quieter, smoother engine, restores lost engine power or money back!

Improved performance guaranteed! Just add a can of Alemite's amazing CD-2 to your crankcase and in 50 miles of driving your engine runs smoother, quieter—gives you all the power it was built to deliver! CD-2 protects your engine, too. Rids it of power-stealing sludge, checks corrosion that can lead to expensive repairs, frees sticking valves, hydraulic valve lifters and rings!

**There's nothing like CD-2 on the market!**

Alemite CD-2 is a concentrated, double-strength formula consisting of six 100% active ingredients. No watery liquids to boil away in a few miles—no wasteful, non-active ingredients. Double-strength CD-2 starts to work the minute you add it to your oil, keeps working every mile you drive till your next oil change!

**Alemite Guarantee Printed on Every Can—Complete Satisfaction or Money Back!**

**ALEMITE CD-2**

Only \$1.35 at Your Car Dealer, Service Station or Garage

**ALEMITE CD-2**

Only \$1.35 at Your Car Dealer, Service Station or Garage

- AVAILABLE AT THESE LOCAL DEALERS
- Edward's Tulsa Service  
734 Belleville Avenue, Belleville
  - Stefanelli Esso Station  
119 Franklin Avenue, Belleville
  - Learnard Chevrolet Inc.  
514 Washington Avenue, Belleville
  - Stan's Tulsa Station  
846 Franklin Avenue, Newark
  - C. U. Barro  
121 Verona Avenue, Newark
  - A. J. Sebben  
690 Broadway, Newark
  - Murphy's Oldsmobile  
75 First Street, Newark
  - Santy's Service  
61 Union Avenue, Belleville
  - Jack Deeny's Garage  
533 Union Avenue, Belleville
  - Belleville Motors  
254 Washington Avenue, Belleville
  - Arrowhead Pontiac  
642 Washington Avenue, Belleville
  - Melchione Bros. Esso  
514 Main Street, Belleville
  - Little's Esso Station  
411 Washington Avenue, Belleville
  - Nick & Jerry's Servicenter  
306 Union Avenue, Belleville
  - Riley's Esso Service  
1163 Belleville Avenue cor. Bridge Street, Belleville
  - Traffic Garage  
216 Washington Avenue, Nutley
  - Michael De Filippo Esso  
Franklin & Vineland Avenues, Nutley

- WHOLESALE DISTRIBUTORS
- NEWARK  
Clinton Square Auto Parts Corp.  
322 Central Avenue
  - MORRISTOWN  
Clinton Square Auto Parts Corp.  
218 Washington Street
  - BLOOMFIELD  
Clinton Square Auto Parts Corp.  
638 Bloomfield Avenue
  - ORANGE  
Clinton Square Auto Parts Corp.  
350 Central Avenue
  - NEWARK  
Automotive Equipment Co.  
123 Hudson Street
  - PASSAIC  
Jersey Distributing Co.  
791 Main Avenue

**PAPER MILL PLAYHOUSE**

MILLBURN, N. J. MILLBURN, N. J. 6:50

Box Office Open Daily 10 A.M. to 9 P.M.

LAST 4 TIMES

**"BRIGADOON"**

OPENS MON., NOV. 16

IRVING BERLIN'S GREATEST HIT

**"Call Me Madam"**

Starring JACQUELINE JAMES, DICK SMART, Douglas Ridgely, Margot Moses, John Taliferro

No Mat. Nov. 25 | Special Holiday Mat. Fri., Nov. 27

MATS. 2:30-Week. 9:00-1:20, 1:30-2:45, 2:45-5:00, 5:15-7:30, 7:45-9:30

SAT. 1:30-1:50, 2:40-5:00, 5:15-7:30, 7:45-9:30

Mon. Nov. 23, 2:40-5:00, 5:15-7:30, 7:45-9:30

SUN. NOV. 22 — Seats New

**"TURNABOUT"**

JR. CIRCUS 2:30 P.M. | REVUE 8:30 P.M. Prices (tax incl.) 1.20, 1.50, 2.00, 2.50, 3.00

Children half-price • Special Family and Group Rates

TICKETS: KNOX, GIGGS, BAMS' ALL AGENCIES, MAIL ORDERS

**WADSWORTH FUNERAL HOME**

F. Douglas Wadsworth

524 Union Ave., Belleville, N. J. Plymouth 9-2879

This newest and most complete Funeral Home brings many years reputation for Integrity and finer Funeral Service.

Years Have Lent Distinction To Our Name

Wadsworth Service is not limited to Belleville and suburbs. We have representatives in all large cities and can provide instant service.

**PATIENCE OUR STOP WORD DON'T BE AFRAID**

Learn To Drive With Ease & Confidence (The Easy Drive System Way)

Courteous, state licensed professional instructors to teach you efficiently and quickly in dual safety controlled cars, either standard or hydraulic. Call Plymouth 9-7600 for further information. Let us make an appointment for you and start you on your way to happy motoring.

**EASY DRIVE SYSTEM**

Licensed & Approved by State of N. J.

# TOWN DEMOCRATS JOIN IN MOVE TO UNSEAT EGAN

## Effort Is Being Made To Convince County Chairman To Resign

George S. Pfau, state chairman of the Americans For Democratic Action, circulated all the members of the Belleville Democratic County Committee this week, soliciting their support in his effort to unseat William J. Egan as Essex County Chairman. Pfau sent to each of the Belleville committee men and women copies of letters which he has sent to Egan, inviting him to resign, and to Charles R. Howell, Democratic state chairman.

In his letter to Egan, Pfau, in inviting his resignation, wrote: "It has been said that old soldiers never die, they just fade away. Without rancor or personal animosity, I beg you to observe this maxim by resigning forthwith as Essex County Chairman of the Democratic Party — for your own sake and for the good of the party and all the people of the county."

"The two-party system is a pillar of representative democracy as developed and practiced in our country. Americans for Democratic Action has observed that in our country where either of the parties become moribund, the result is an absence of democracy, no matter how good the remaining party is. In Essex County, the Democratic Party, without effective leadership, has been inept, ineffective, and totally incapable of organizing the great number of Democrats here for political action."

"This was clearly demonstrated Tuesday's election. The Democratic candidate for governor, with his campaign managed by vigorous, effective, and liberal state leaders, and with no help and much hindrance from you, carried the county by a comfortable majority. At the same time, the county ticket, with the millstone of the county leader about its neck, was rejected by the same voters."

"There are many people within the Democratic Party in Essex County whose capabilities and loyalties to the principles of Franklin D. Roosevelt, Harry S. Truman, Adlai Stevenson, and Robert H. Meyer match those of

**ROLLER SKATING**

Riviera Park

TUESDAY 7:30 P. M. FRIDAY SATURDAY to SUNDAY 11 P. M. SATURDAY and SUNDAY MATINEE 2 P. M. TO 5 P. M.

701 WASHINGTON AVE. BELLEVILLE, N. J. Plymouth 9-4960

Free Dance Lessons Tuesday P. M.

You can't buy better auto insurance

**Why pay more?**

Allstate's low rates are the better value you'd expect from the company founded by Sears.

See how much you save. Phone or visit your Allstate Agent today...

A. Thomas Veltre and Robert Lawrence 165 Washington Avenue Phone: Plymouth 9-7111 and 9-1011

You're in Good Hands with...

**ALLSTATE INSURANCE COMPANY**

A wholly-owned subsidiary of Sears, Roebuck and Co., with assets the liabilities distinct and separate from the parent company. Home office, Moline, Illinois.

# RODINO REPORTS EXAMINATIONS DUE FOR COAST GUARD

## Congressman Stresses Entrance Is By Competitive Exams, Not By Appointment

Congressman Peter W. Rodino, Jr., announced this week that the competitive examination for entrance to the U.S. Coast Guard Academy will be held on February 23 and 24. Examinations, to be held in 109 cities, are open to young men between seventeen and twenty-two.

The four-year course leads to a Bachelor of Science degree in engineering and a commission as a career officer in the Coast Guard.

"There are no appointments or geographical quotas for entrance to the Coast Guard Academy," Rodino said. "Qualified young men who are interested in the Coast Guard as a profession should write to Coast Guard Headquarters in Washington, D. C. Applications must be postmarked on or before January 15."

**STARTS TODAY CAPITOL PL-9-1097**

Enjoy These Shows on Our New WIDE GIANT Screen

Wed., Thurs., Fri. & Sat. Eve. Nov. 11-12-13-14

Robert Mitchell and Linda Darnell in "SECOND CHANCE" in Technicolor — also "THE GLORY BRIGADE" with Victor Mature

Sat. Mat. ONLY Nov. 14

**GIANT MOVIE FESTIVAL**

"GLORY BRIGADE" with Victor Mature also COMMANDO COED in "Raiders of the Seven Seas" and COMMANDO COED in "Destroyers of the Sun" PLUS FREE STATIONERY to Boy Scouts and Girls

Sun., Mon., Tues. & Wed. Nov. 15-16-17-18

Grosvenor Park & Audrey Hepburn in "ROMAN HOLIDAY" plus "CLIPPED WINGS" with the Bowery Boys

Autographed Photos of Audrey Hepburn to First 100 Ladies Sunday Mat. Nov. 15

Thurs., Fri. & Sat. Nov. 19-20-21

"ISLAND IN THE SKY" ALSO "WINGS OF THE HAWK"

Those interested in making colorful pillows, either for themselves or for Christmas gifts, bring material listed on an old pillow, and material needed to cover it.

A round pillow 16" across requires 3/4 yard of plain material 141 3/8" wide.

**LOEWS NEWARK**

ON OUR WIDE SCREEN WITH STUNNING PHOTOS

**FROM HERE TO ETERNITY**

EXTRA! TOM & JERRY COLOR CARTOON PETE SMITH SHORT

# Women's Club Home Dept. Holding Project Meeting

Americian Home Department of the Women's Club, with Mrs. John E. DeNike Chairman, will have a Project Meeting on Monday at 1:30 p.m.



Nearly \$3,500,000

**DISTRIBUTED TO MORE THAN 27,000 CHRISTMAS CLUB MEMBERS**

Yes, that's the amount Howard's 1953 Christmas Club members saved... the easiest and surest way... for Christmas and other year-end expenses. Profit by their example...

**JOIN OUR 1954 CHRISTMAS CLUB!**

No dues or fees. Just make 50 weekly deposits of \$1 to \$10 each, and YOU'LL RECEIVE \$50 to \$500 NEXT NOVEMBER!

Remember to save a part of your Christmas Club check in a regular Howard savings account.

**The HOWARD SAVINGS Institution**

The Largest Savings Bank in New Jersey • Chartered 1857

764-768 BROAD STREET • NEWARK 1, N. J.

Bloomfield Ave. Branch: Bloomfield & Clifton Aves. (Zone 4)

Springfield Ave. Branch: Springfield Ave. & Bergen St. (Zone 3)

Valhalla Branch: South Orange & Sandford Aves. (Zone 6)

Member Federal Deposit Insurance Corporation

**MORE Passengers ride De CAMP BUSES every year**



The year 1953 is not over, but already the number of passengers riding DeCamp buses far exceeds the total of any other year in our long history.

**There must be a reason**

And that reason is De CAMP'S MODERN TRAVEL SERVICE... dependable transportation in safe, clean buses driven by competent, courteous drivers; riding comfort; regular schedules; and on-time departure and arrival. These are the traditions of DeCamp... the quality service the public appreciates.

Ride the yellow and blue... millions do. It's the fast, pleasant, economical highway transportation to New York.

Commuting... Shopping... Visiting

When You Go to NEW YORK Go First Class

**DeCAMP BUS LINES**

CLIFTON, NEW JERSEY

For Timetable Information New Jersey—Telephone PRescott 8-7900 New York—Telephone LOngacre 4-8484

**NEW YORK PORT AUTHORITY TERMINAL, 8th AVE. & 41st ST. PLATFORM 73**



# Week's Events Listed For The Reformed Church

The Reformed Church at the corner of Main and Rutgers Streets having Catechism Classes for boys and girls at 3 p.m. today at the Chapel. Dr. Strijk is the teacher. Tonight at 8:00 the Officers and Teachers of the church will hold a meeting at the Chapel. Refreshments will be served. On Sunday Church School will begin at 9:45. There are classes for all ages. Mr. Charles W. Thatcher is superintendent. At 10:50 Morning worship will be held with the sermon "To Know God is to Live." Everybody is invited to visit the old Sanctuary now 257 years old.

On Thursday at 1:30 the Women's Missionary Society will meet at the Chapel. Refreshments will be served. Dr. Strijk will conduct the service for the women. All women are invited.

# Open House Monday, At Passaic Avenue School

Open House will be the feature of the Parent-Teacher Association program to be held on Monday evening at Passaic Avenue School. This night has been especially set aside to give parents a real opportunity to get acquainted with the teachers and the principal who play such an important role in the lives of their children. Through them, parents will get to know the special problems that face the community's educational system. It will afford an excellent chance to learn just how they can help the school give

children the best education possible. It gives the school an opportunity to learn of special talents or knowledge that parents may possess that might benefit the school system. In the last analysis parents determine the kind of education their children will get. Good schools are, in large measure, parents' responsibility. In view of the Parent-Teacher conferences planned for December, Open House on Monday evening will be for visitation only.

# Petrean's Of St. Peter's To Present Dramatic Play

The Petrean Club of St. Peter's Church will present its third annual dramatic production on Saturday evening, November 23, in the new auditorium.

The cast of the three act comedy "He and My Shadow," directed by James A. Leonard, has been in rehearsal for the past six weeks.

Joseph Zott, chairman of dramatic activities of the group, is

**Carlo Maino**  
Carlo Maino of 86 Roseville Avenue, died Monday at the home of his sister, Mrs. Rose Bonavita of 86 St. Mary's Place, Nutley, after a brief illness. He was 68. Born in Newark, Mr. Maino moved to Belleville 40 years ago. He was a mason contractor in Newark and Belleville for many years. He retired 20 years ago. Besides Mrs. Bonavita, Mr. Maino leaves three other sisters, Mrs. Freda Carlucci, Mrs. Minnie Remilino and Mrs. Milie Chipman, all of Newark, and four brothers, Joseph, Salvatore, Daniel and Anthony, also of Newark.

general chairman. Tickets are now available at \$1.00 each.

The cast comprises: Robert Christie, Mary Anne Earl, William Heal, Virginia Merritt, Regina Morley, Grace Schickman, Charles Sutter, Gary Vanderbilt, Ruth Vanderbilt, and Gloria Vasta.

The proceeds will go toward St. Peter's Campaign Fund.

# Emidio Luciano

Emidio Luciano of 43 Eugene Place, died Tuesday in St. Vincent's Hospital, Montclair, after an illness of six months. He was 46.

Mr. Luciano had lived in Belleville all of his life. He was a member of St. Anthony's Church. Mr. Luciano was employed by Populart-Products Co., of Rahway.

Surviving are his wife, Mrs. Jennie P. Luciano; three sons: Jerry, on route home from Korea, where he was stationed with the U. S. Army, Joseph and Emidio Luciano Jr., both at home; a brother, Nicholas Luciano of Newark, and a sister, Mrs. Clementine Tronolone of Bloomfield.

# Mrs. Henry W. Neall

Mrs. Josephine Neall of 341 Union Avenue, widow of Henry W. Neall, died Tuesday at the Casey Nursing Home, Montclair, after a long illness. She was 80.

Born in Alsace-Lorraine, Mrs. Neall came to this country when a young girl and lived in New York before moving to New Jersey. She lived in Irvington 25 years and in Belleville since 1940. Surviving are three sons, Charles H. Bippus of Irvington, Alfred P. Bippus of Livingston and George H. Neall of Babco, Canal Zone; two daughters, Mrs. Raymond Dico of Belleville and Miss Evelyn C. Neall of Belleville, and a grandson.

Funeral services will be conducted today at 2 p.m. at the Wadsworth Funeral Home, by Rev. James K. Morse of Fenwick Memorial Presbyterian Church. Burial will be in East Ridgewell Cemetery, Clifton.

Henry Girardot

Henry Girardot, auditor with the New Jersey Bell Telephone

Company's executive office, has served it both as assistant and office manager. His accounting department career includes assistant-treasurer's department and segment as staff accountant.

FOR APPOINTMENT PHONE NUTLEY 2-2458  
OFFICE HOURS: 9:00 A. M. TO 12 NOON  
EVENINGS: 7 TO 9 ON MON., WED. & FRI.

# Harold J. Wolff, O. D.

EYE EXAMINATIONS

375 FRANKLIN AVE.

NUTLEY, N. J.

Opposite Post Office

"FREE PARKING IN REAR"



**Acme Festival**

PLACE YOUR ORDER NOW FOR YOUR **Lancaster Brand THANKSGIVING TURKEY!**



# Maryland Turkeys

FRESH KILLED  
PRIME QUALITY SPECIALLY FED  
YOUNG BROAD BREASTED  
HENS & TOMS  
Order Yours EARLY  
AVAILABLE AFTER NOV. 12

★

# CEDAR POINT FARM

THE FEDERAL LEATHER CO.  
PL 9-3800 681 Main St., Belleville, N. J.

# MONEY NOW for family needs



**FIDELITY UNION**

We will be glad to grant a personal loan...

Fidelity Union's fast, friendly, low cost personal loan service provides you with the money you need when you need it. If you have doctor's or dentist's bills or insurance premiums to pay, need clothing for the family, new furniture or household appliances or home repairs you can obtain the MONEY NOW at Fidelity Union.

Requirements are simple—regular employment or a steady income and a reputation for meeting your obligations. Loans are repayable in convenient monthly installments to suit your income and Fidelity Union's low bank interest rate saves money, too! Why not come in and talk it over? We will welcome the opportunity to be of service.

# FIDELITY UNION TRUST COMPANY

15 Offices in Essex County  
NEWARK • BELLEVILLE • EAST ORANGE • IRVINGTON  
New Jersey

In Newark: 755 Broad Street • 464 Broad Street • 2 Ferry Street • 158 Fleming Avenue  
500 Orange Street • 4 Bloomfield Avenue • 505 Clinton Avenue • 210 Ferry Street  
295 Lyons Avenue • 241 Springfield Avenue  
In East Orange: 480 Central Avenue • 329 Main Street • 224 North 10th Street  
In Belleville: 144 Washington Avenue In Irvington: 1097 Clinton Avenue

# Acme's Fall Food Festival

PLACE YOUR ORDER NOW FOR YOUR **Lancaster Brand THANKSGIVING TURKEY!**

**PILLSBURY Angel Food** 14-oz. pkg. **49¢**

**Cake Mix** PILLSBURY 9-oz. pkg. **16¢**

**Pie Crust** PILLSBURY 9-oz. pkg. **17¢**

**Pillsbury Pancake Flour** 20-oz. pkg. **37¢**

**Cake Mix** PILLSBURY White Golden or Chocolate Fudge 17-oz. pkg. **37¢**

**Pillsbury Hot Roll Mix** 14-oz. package **27¢**

**COOKIES, CRACKERS**

**Rootie Kazootie** WESTON 9-oz. pkg. **29¢**

**Wheat Snax** KEEBler Box, pkg. **21¢**

**Cookies** NABISCO Chocolate Chips 25¢

**Fig Bars** SUNSHINE 10-oz. package **37¢**

**Sunshine Brownies** 71-oz. package **39¢**

**PANTRY NEEDS**

**Herb-Ox BOULION CUBES** 3 pkgs. of 5 **22¢** (Pkg. of 12 for 37¢)

**Durkee Coconut** 4-oz. package **17¢**

**Rice Puffs** GOLD SEAL 4-oz. **25¢**

**Wheat Puffs** GOLD SEAL 4-oz. **9¢**

**Jello-O Puddings** 3 pkgs. **25¢**

**Dill Gherkins** WALBECK 8-oz. jar **18¢**

**Dill Pickles** PICKNICK Quart Jar **33¢**

**Ideal Pumpkin** 2 20-oz. pkgs. **25¢**

**Bread Crumbs** DEVONSHIRE 10-oz. pkg. **15¢**

**LA CHOY FOODS**

**Bean Sprouts** LA CHOY 10-oz. can **14¢**

**Chop Suey** LA CHOY MEATLESS 10-oz. can **35¢**

**Chinese Dinner** LA CHOY MEATLESS 10-oz. can **57¢**

**Noodles** LA CHOY CHOW MEIN 2 5-oz. cans **31¢**

**Soy Sauce** LA CHOY 7-9.9. bottle **10¢**

**MISCELLANEOUS**

**Lux Flakes** large 12-oz. package **27¢**

**Lifebuoy** 3 Reg. 25¢ 3 bath cakes **35¢**

**Rinso** large 21-oz. pkg. **25¢** 60-oz. pkg. **49¢**

**Lux Soap** 3 regular cakes **19¢** 2 large cakes **21¢**

**Silver Dust** With Canaan 18-oz. can **26¢**

**Silver Dust** With Canaan Dish Towel 30-oz. pkg. **55¢**

**Breeze** With Face Cloth, 10-oz. **30¢** With Dish Towel, 10-oz. **59¢**

**Swan Toilet Soap** 6 cakes **26¢**

**Pads** American Soap-Filled package of 12 **20¢**

**Surf** 10-oz. pkg. **29¢** 10-oz. pkg. **57¢**

**GOVERNMENT GRADED U. S. CHOICE**

**Round ROAST or STEAK** lb. **79¢**

BONELESS! No fat added! Cut from top-quality, tender, juicy, government graded "U. S. CHOICE" beef. Properly trimmed of excess fat before weighing.

**Chuck Lamb** lb. **39¢**

Three meals in one — stew, roast and chops! Most economical and delicious! At all Acme's!

**Smoked Boneless Butts** lb. **73¢**

**Rib Roast Beef** 1-bush. oven ready **69¢**

**Boneless Brisket Beef** fresh or corned **65¢**

**Plate Beef** FRESH or CORNED **15¢**

**Tender Calves Liver** lb. **79¢**

**Sliced Bacon** lb. pkg. **69¢**

**Bologna, Liverwurst** Midget lb. **59¢**

**Flank Steaks** lb. **65¢**

**Beef Sweet Breads** lb. **49¢**

**Baby Smoked Sausage** 8-oz. pkg. **37¢**

**Sausage Meat** SCHICKHAUS lb. pkg. **49¢**

**Meaty Scrapple** lb. **29¢**

**LOOK FOR Story-A-Day**

Weekly magazine for children, 3 to 7, in the puppy display! **25¢**

**FRUITS & VEGETABLES**

**ORANGES** Florida dozen **29¢**

**GRAPEFRUIT** Florida Seedless 4 for **25¢**

California Iceberg Lettuce Extra head **19¢**

Fancy Selected Tomatoes box **17¢**

Fancy Bosc Pears 2 lb. **29¢**

Fancy Cabbage 3 lb. **10¢**

Fresh Escarole lb. **7¢**

**"Dividends for Homemakers"**

**Acme's New T-V Show By Ruth Bean, Famous Home Economist, WATV, Channel 13**

**Every Thursday, 3.30 to 4 p.m.**

New recipes, menu suggestions, best food buys, price phone call!

**FROSTED FISH**

Acme's frozen fish is "fresher than fresh"—frozen fresh from the boats at the peak of flavor. No preservatives, no salt, no water! Keep a supply in your refrigerator freezer compartment. Every day is fish day at Acme!

**Halibut Steak** lb. **59¢**

**Cod Steak** All Food! No Water! No Meat! No Fat! lb. **43¢**

**Salmon Steak** lb. **69¢**

**Swordfish Steak** lb. **69¢**

**Whiting Fillet** lb. **29¢**

**Fancy Scallops** lb. **57¢**

**Mackerel Fillets** lb. **43¢**

**Perch Fillets** lb. **33¢**

**Lobster Tails** lb. **89¢**

**FROSTED FOODS**

**SPINACH**

Seabrook Chopped 2 14-oz. cans pkg. **33¢**

or Regular 14-oz. can **21¢**

**Beans** IDEAL Green 10-oz. French-Style, pkg. **21¢**

**Birdseye Corn** Cut Golden 10-oz. pkg. **20¢**

**Birdseye Peas** 2 10-oz. **33¢**

**Libby's Melon Balls** 7-oz. **21¢**

**Raspberries** 10-oz. **49¢**

**Juice** DASCIO Concentrated 6-oz. can **10¢**

**Idol Sliced GRAPEFRUIT** 6-oz. can **10¢**

**Peaches** 12-oz. pkg. **19¢**

**DAIRY**

**Sharp COLORED CHEESE** lb. **65¢**

Fancy Blue Cheese 1 lb. **69¢**

Sharp Cheddar 1 lb. **55¢**

Kraft Cheez Whiz 8-oz. jar **33¢**

American Cheese 8-oz. can **33¢**

Kraft Velveta 8-oz. can **33¢**

Pabst-ett Standard 6-oz. can **25¢**

Muenster Cheese 8-oz. can **55¢**

Cottage Cheese 8-oz. can **19¢**

Cottage Cheese 16-oz. can **31¢**

**BAKERY**

Devil's Food Coconut

**Bar Layer** 39¢

Regularly 45¢ Light vanilla butter cream icing topped with long coconut strands.

**Pecan Honey Buns** Package **35¢**

**Bridge Rye Bread** Supreme Loaf **19¢**

**Bread** SUPREME 16-oz. loaf **19¢**

Save 5¢ a loaf! Dated for freshness!







# BIKE CLUB RACES HELD TOMORROW

Championships Postponed  
Last Week, Again Slated;  
Prizes For Boys And Girls

Because of last week's inclement weather it was necessary to postpone the Belleville Bicycle Club Championships until this week, Saturday, 1:30 P.M. at the Municipal Stadium.

The Club Championships are open to all boys and girls in the Town of Belleville. The races will include balloon, stock bike races, lightweight stock bike races, girls stock bike races and racing division events.

The Bicycle Club has a beautiful array of prizes to go to the winners. These prizes include gold, silver and bronze medals, top quality bike speedometers, bike sirens, bike headlights, and bicycle lamps. There will be five prizes awarded in each of the stock bike events and eight prizes awarded in each of the racing division events.

It is the hope of the Bicycle Club that this event will interest many new youngsters in its fine program of activities. The Bicycle Club is active year-round with a program including tours, races, swimming trips, and indoor racing events on the Little Rollers. All boys and girls in Belleville are invited to participate in the Club Championships tomorrow at the Municipal Stadium.

OUR CLASSIFIED SECTION  
BRINGS QUICK RESULTS  
TO ADVERTISERS

- protects furniture
- against alcohol
- hot dishes

## WIPE-ON

plastic base coating

LASTS FOR MONTHS - EVEN  
ON HARD USED FLOORS!

Get Your

**WIPE-ON Today**

Only 59¢ And \$1.49

At Hardware and Dept. Stores  
EMEREE MFG. CO., ELIZABETH, N. J.

Korean & World War II

**VETERANS**

\$55.00 per month buys  
Brand New Car.

Also, All Size

**TRUCKS & BODIES**

\$48.46 Per Month Buys

3 Ton Pickups

NO MONEY DOWN

36 Months To Pay

Also Used Cars - All Makes

Mr. Schlein PL 9-1200

**D & J MOTORS**

25 Washington Ave.

Belleville

Where's Elmer ..



... enjoying good food and  
congenial company at the  
same time. Come here for  
a meal tonight and see  
what you've been missing!

**FRANKLIN  
CASINO**  
BAR-RESTAURANT  
338 FRANKLIN AVE.  
BETWEEN JORDAN & ST. MICHAEL STS.

PL 9-2111

# "The Best Dressed Birds in Town Come from FOOD FAIR"

Better order your FARMER GRAY.

Top Grade TURKEY Today!



*Food Fair  
Thrifty Memo—  
So sure to buy our Finest  
Enriched, White, Sliced  
Lady Fair Bread  
2 loaves only 29¢  
Egg Prices  
Are Lower  
at Food Fair!*



## TIME YOU TRIED THE FINEST!

You'll like these fresher, finer FOOD FAIR coffees!  
Wherever you try to coffee, one of these fine  
blends will be just right. Ground fresh as you  
buy it, the way you want it... you'll save money  
on every pound!

RICH, WINEY, HEAVY-BODIED

## LADY FAIR

lb. 86¢  
bag



MILD, MELLOW, SWEET-DRINKING

## FYNE TASTE

lb. 84¢  
bag

Choice South American Coffees blended for two  
distinct flavor preferences. One's for you!

## DAIRY FAIR

BORDEN'S - AMERICAN

**Cheese Spread** 1 1/2 lb. pkg. 59¢

BORDEN'S

**Gruyere Cheese** 6 oz. pkg. 29¢

SAVE 11¢ ON THIS SPECIAL OFFER!

**Cottage Cheese** 8 oz. cup REG. PRICE 18¢ EACH BOTH FOR 25¢

**Pineapple Cottage Cheese** 8 oz. cup

## Ocean Fresh Sea Food

SELECTED LARGE

**Florida Shrimp** lb. 79¢

**Canadian Smelts** No. 1 - lb. 39¢

**White Fish** FRESH CAUGHT LAKE ERIE lb. 59¢

BARGAIN OFFER!



**yes  
tissues**

3 boxes 85¢

Plus a fourth box at No Extra Cost  
Get Details at Your Food Fair

**Spry** 1 lb. can 32¢ 3 lb. can 87¢

Lux Liquid Detergent 12 OUNCE SIZE can 39¢

Lux Liquid Detergent 22 OUNCE SIZE can 69¢

Swan Soap REG. SIZE 3 bars 22¢ LGE. SIZE 3 bars 37¢

Swan Toilet Soap 1-1/2 lb. can 25¢

Lux Soap REG. SIZE 3 bars 19¢ BATH SIZE 2 bars 19¢

Lifebuoy Soap REG. SIZE 3 bars 25¢ BATH SIZE 2 bars 25¢

Lux Flakes LARGE SIZE package 27¢

Surf WITH 50¢ WORTH COUPONS giant pkg 57¢

Surf LARGE SIZE package 29¢

Breeze WITH DISH TOWEL - GIANT SIZE pkg 59¢

Breeze WITH FACE CLOTH - LARGE SIZE pkg 30¢

Rinso LARGE SIZE pkg 25¢ GIANT SIZE pkg 49¢

**Silver Dust** 1 lb. can 28¢ 5 lb. can 55¢  
WITH FACE CLOTH - WITH DISH TOWEL

**VOLUME No. 9** Now on Sale

OF THE WORLD FAMILY

**ENCYCLOPEDIA**

89¢ EACH

OPEN LATE: Thursday to 9 p. m., Friday to 10 p. m., SATURDAY 9 a. m. to 5 p. m.

SEE HOW YOU SAVE ON PSG. TOP QUALITY MEATS!...

SMOKED "READY TO EAT"

\*PROTECTED, SELECTED, GUARANTEED

# HAMS

SHANK PORTION

lb. 39¢

FULL CUT SHANK HALF lb. 53¢

BUTT PORTION

lb. 49¢

FULL CUT BUTT HALF lb. 65¢

## HAM SLICES

Veal Roast LEGS OR RUMPS . . . lb. 49¢

Loin Veal Chops . . . lb. 69¢

Fresh Pork Shoulders SHORT SHANK lb. 39¢

CENTER CUT

lb. 99¢

Sliced Bacon COBELS OR FAVORITE lb. cello 69¢

Hygrade Frankfurters lb. cello 49¢

Hygrade Midget LIVERWURST OR BOLOGNA lb. 49¢

SEE HOW YOU SAVE ON FAMOUS NAME GROCERIES

# Libby's Tomato Juice

46 oz. can 27¢

# Yellow Cling Peaches

Fyne Taste Sliced or Halves No. 2 1/2 can 25¢

# Stokely's Golden Corn

Cream Style 303 can 15¢

# Toilet Tissue

PETAL SOFT WHITE or COLORED

2 rolls 23¢



Perfect Partners for

## CHICKEN POT PIE!

BETTY CRÖCKERS - 12 in 1 Mix

**BISQUICK** 40 oz. pkg. 39¢

BLUE STAR BONED

**CHICKEN** 4 oz. can 29¢

Hudson Paper Towels . . . 2 Rolls in pkr. 33¢

Coupon for FREE RAINBOW NAPKINS on back of package

Broadcast Corned Beef Hash 16 oz. can 27¢

Broadcast Chili Con Carne WITH 16 oz. can 25¢

Bosco MILK AMPLIFIER 12 oz. jar 29¢

Bab-O Cleanser 14 OUNCE SIZE 2 cans 23¢

Boraxo 3 OUNCE SIZE can 17¢

20 Mule Team Borax 2 POUND SIZE pkg. 33¢

Sunshine Clover Leaves 8 OZ. SIZE pkg. 29¢

Baker Bridge Mix Cookies . . 9 oz. pkg. 29¢

Baker Black Walnut Cookies 8 oz. pkg. 29¢

Jell-O Puddings ALL FLAVORS 3 pkgs. 25¢

## Durkee's Coconut

SHREDDED 8 oz. can 23¢

## Olive Oil

2 oz. can 14¢ 1/2 pt. can 41¢ 1 pt. can 75¢

## White Rose Tea

1/4 lb. pkg. 33¢ TEA BAGS 19¢

## Rose-X Starch

QUART SIZE bot. 17¢

## Nylast

FOR LONGER LIFE FOR NYLONS 4 oz. bot. 39¢

## WILBERT'S Polishes & Waxes

Furniture Polish CREAM 8 oz. bot. 29¢ Glass Wax PINT SIZE can 35¢

Furniture Polish SILICONE 12 oz. bot. 59¢ No-Rub Floor Wax . . . pint can 45¢

No-Rub Floor Wax (Extra 1/2 Pint) BOTH 1/2 pint & quart 81¢

See How You SAVE on FROZEN FOODS at Food Fair

**Snow Crop Green Peas** 2 10 oz. pkgs. 33¢

**Snow Crop Spinach** CHOPPED or LEAF 2 14 oz. pkgs. 33¢

SNOW CROP - UNSWEETENED

Blended Juice 2 6 oz. cans 31¢

SNOW CROP

Red Raspberries 12 oz. pkg. 39¢

SNOW CROP - UNSWEETENED

Grapefruit Juice 2 6 oz. cans 31¢

SNOW CROP

Chicken Pot Pies 8 oz. pkg. 37¢

SNOW CROP

Cut Corn . . . 10 oz. pkg. 19¢

BOOTH'S

Breaded Shrimp 10 oz. pkg. 73¢

**Snow Crop Broccoli** SPEARS 2 10 oz. pkgs. 49¢

SEE HOW YOU SAVE ON FOOD FAIR FRESH PRODUCE!...

# Tangerines

FLORIDA "FIRST OF THE SEASON"

dozen 33¢

# Fresh Green Broccoli

CALIF.

1 lb. bunch 23¢

# Sweet Potatoes

FANCY GOLDEN

3 lbs. 23¢

# Seedless Grapefruit

FLORIDA FINEST INDIAN RIVER

4 for 29¢

554 Washington Avenue, Belleville



# LETTERS

What The News Says  
 To the Editor, The Times-News:  
 In your account of the Israel situation, appearing in "One Man's Opinion".....you mention a border raid by Israel "troops". Prime Minister Ben Gurion has given the lie to this assertion, and I am surprised that you report it.....  
 Louis Sussman,  
 66 Van Rensselaer Place,  
 Belleville.  
 (Editor's Note: Mr. Sussman raised an issue which cannot be ignored. Fortunately, the Kibya massacre is now the subject of a public inquiry by the Security Council of the United Nations and it is possible for the world to know the truth, devoid of propaganda from either Arab or Jewish sources. At Monday's session of the Security Council, the United States, Great Britain, France and Greece all held Israel responsible for the Kibya border raid. In its account of the Security Council meeting, The New York Times, of Tuesday, printed the following report regarding the nature of the Israeli raid: "Sir Gladwyn Jebb, (the delegate of Great Britain) said his Government agreed with Maj. Gen. Vagb Bennike of Denmark, chief of the United Nations truce observation organization, 'that the technical arguments tending to show that Israel military forces were implicated are completely convincing.'"  
 "Sir Gladwyn pointed out that General Bennike, subordinate, Commander E. D. Hutchison, United States Navy, had reported that 250 to 300 well-trained soldiers took part in the operation and that the approaches to the village, Kibya, passed through an area protected by Israeli military forces."  
 "Whether this body consisted of regulars or of militia has really no bearing on the case," Sir Gladwyn added. "In either event it was a disciplined, organized, well-armed Israeli military force. In the view of Her Majesty's Government, therefore, it is very difficult for the Israeli Government to escape responsibility for the attack."  
 "General Bennike's answers to delegates' questions were more damaging to the Israeli position than his original report. Among the highlights was the following: "At no time since 1949 have investigations by the commission shown that Bangalore torpedos, 2-inch and 81-mm. mortars and demolition charges, which are standard equipment in the Israeli army and which were used in the Kibya raid, had been issued to the militia defending Israeli frontier settlements. This question had been asked him by Israel in support of her contention that such equipment had been issued to the frontier militia and that militiamen, not members of the Israeli regular army, had carried on the Kibya raid." R.E.H.)

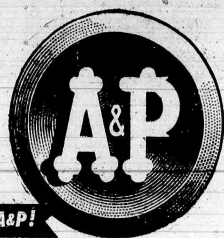
**LEARNARD CHEVROLET INC.**  
 Must Have  
**40 - NEW CAR ORDERS - 40**  
**BY NOVEMBER 21st**  
**\$295.00 DOWN**  
**36 MONTHS TO PAY**  
**LOWEST BANK RATES**  
**NOBODY OUTSELLS US**  
 514 Washington Ave. Belleville  
 PL - 9-4200

Believe it or not!  
 ALL YOU HAVE TO PAY  
 TO "ROCKET" AWAY IS  
**\$2350.62**  
 delivered locally, state and local taxes extra.  
 Your price depends upon choice of model and body style, optional equipment and accessories. Prices may vary slightly in adjoining communities because of shipping charges. Check our easy terms and liberal allowances. All prices subject to change without notice.  
**"ROCKET" ENGINE**

**OLDSMOBILE**  
 SEE YOUR OLDSMOBILE DEALER  
**BELLEVILLE MOTORS**  
 53 Washington Avenue, Belleville, New Jersey

**GOOD DANCERS**  
 Are Happy People...  
**HOW ABOUT YOU?**  
 Learn the secret to good times and popularity quickly... come to Arthur Murray's teaching experience) you learn the key to all dances your very first lesson. Then watch those invitations come your way... because good dancers are always in demand. So come in or phone now. Have the fun and good times that make people happy.  
**ARTHUR MURRAY**  
 NEWARK - 106 Halsey Street • Market 3-5151  
 EAST ORANGE - 44 Brick Church Plaza • Orange 3-3900

# Come Share These BIG SAVINGS!



A&P's invitation to compare values applies to quality as well as to price. For only food that gives you your money's worth in good nutrition and good eating is a really good value. That's the only kind you'll ever get at A&P, where prices are lower, often, but quality standards, never. Come see... come save... at A&P.

Come Save at A&P!

**A&P's Best Meat Buys of the Week!**  
**A&P's Famous "Super-Right" Quality**  
**PORK LOINS**  
 Rib End **35¢** Loin End **45¢** Rib Half Full Cut **45¢** Loin Half Full Cut **53¢**  
 Delicious with Roast Pork—Sauerkraut A&P fancy 2 27 oz. cans 33¢ Applesauce A&P fancy 2 14 oz. cans 35¢  
**Ribs of Beef** "Super-Right" Regular Style 10" cut lb. **55¢** 7" cut lb. **65¢**  
**Oven-Ready Ribs of Beef** In Self-Service Meat Departments 10" cut lb. **65¢** 7" cut lb. **73¢**  
 Top Sirloin Roast Boneless lb. **85¢** Boneless Chuck Pot Roast lb. **65¢** Ground Beef Freshly ground lb. **39¢** Rib Lamb Chops Short cut—less waste lb. **75¢** Smoked Hams Shank portion lb. **39¢** Butt portion lb. **49¢** Smoked Hams Whole or either half full-cut lb. **59¢** Ready-to-Eat Hams Shank portion lb. **43¢** Butt portion lb. **53¢** Ready-to-Eat Hams Whole or either half Full cut lb. **61¢**  
 Chickens Broiling & frying—Regular style lb. **39¢** 2 1/2 to 3 1/2 lbs.—In Service Meat Depts. lb. **53¢** Broiling & frying—Ready-to-Cook Under 3 lbs.—In All Meat Depts. lb. **53¢** Pork Chops Hip and shoulder cuts lb. **35¢** Center cuts lb. **69¢** Fresh Scallops Available in Fresh Fish Depts. lb. **69¢**  
**Order Your Thanksgiving Turkey Now at A&P!**  
 The Best in Fresh Fruits & Vegetables!  
**Potatoes** Long Island U. S. No. 1 15 lb. bag **41¢** 10 lb. bag **29¢** "A" Size  
**Oranges** Florida New Crop 5 lb. bag **35¢** 8 lb. bag **49¢**  
**Grapefruit** Florida—Medium Size 4 for **25¢**  
 Tomatoes Red, ripe carton 3 to 4 17¢ Regalo brand stalk 15¢  
 Pascal Celery Regalo brand 2 lb. **29¢** Bosc or Anjou 2 lb. **29¢**  
 Eating Pears Regalo brand 2 lb. **12¢** cello bag  
 Cole Slaw From Jersey farms 2 lb. **19¢**  
 Sweet Potatoes  
 Iceberg Lettuce From Western farms large head 19¢  
 Salad Mix Regalo brand 8 oz. cello bag 15¢  
 Avocado Pears Florida—large size sliced or halves each 19¢  
 Cortland Apples All-purpose 3 lb. **29¢**  
 Delicious Apples Western lb. **19¢**

Thrifty, Quality Baked Goods!  
**Jane O Parker**  
**Orange Chiffon Cake** each **49¢**  
 Feather light cake with sunny orange flavor in every tender crumb. Perfect partner for desserts.  
 Other Jane Parker Values!  
**Mince Pie** Regular Size each **59¢**  
**Danish Ring** Fruit and Nut each **39¢**  
**White Bread** Saves you up to 5¢ 16 oz. loaf **15¢**  
 Dairy Delights  
**Sharp Cheddar** Aged Over 1 Year lb. **65¢**  
 Muenster Cheese Finest domestic lb. **53¢**  
 Blue Cheese Finest domestic lb. **69¢**  
 Kraft's Cheez-Whiz 8 oz. **33¢** 16 oz. **59¢**  
 Cocktail Spreads Borden's—relish, pimento, olive-pimento 5 oz. **25¢**  
 Cream Cheese Borden's or Philadelphia 8 oz. **39¢**  
 Gruyere Cheese Swiss Knight—imported 6 oz. **43¢**  
 Frozen Foods  
**Lima Beans** Birds-eye—Forkhock 2 10 oz. pks. **45¢**  
**Green Beans** Birds-eye or Libby's—French style 10 oz. **23¢**  
**Blended Juice** Snow-Crop—unsweetened 2 6 oz. cans **39¢**  
**Orange Juice** Libby's 2 6 oz. cans **39¢**  
**Chicken Pies** Swanson's or Birds-eye 8 oz. **39¢**  
**Sandwich Steaks** Exceltior brand 6 oz. **39¢**  
**Breaded Shrimp** Cap'n John 10 oz. **65¢**  
 Grand Ann Page Pantry Values!  
 Ann Page—Pure Peach, Pineapple or Apricot  
**Preserves** 1 lb. jar **25¢** 2 lb. jar **45¢**  
**Blended Syrup** 12 oz. **23¢** 24 oz. **39¢**  
**Spaghetti Sauce** With mushrooms 8 oz. **10¢**  
**Sparkle Puddings** 3 pkg. **17¢**  
**Tomato Soup** 10 1/2 oz. **10¢**  
**Peanut Butter** Crunchy or Creamy Smooth 12 oz. **33¢**  
**Extracts** Vanilla, Lemon 2 oz. bot. **21¢**  
 Candy Buys...  
**Peanut Butter Chips** Walthmore 8 oz. **29¢**  
**Peanut Brittle** Sophie Mae 16 oz. **37¢**  
**Orange Sticks** Walthmore 8 oz. **29¢**  
**Butterscotch Patties** Reed's 10 oz. **27¢**  
**Suchard Chocolate Squares** Mill-Almond 1 lb. **25¢**  
**Candy Bars & Gum** All 5¢ varieties 6 pks. **23¢**  
 Reduced for the Holidays...  
**Granberry Sauce** Ocean Spray Whole or Jellyed 2 16 oz. cans **35¢**  
**Nonesuch Mince Meat** 2 16 oz. cans **39¢**  
**Flako Pio Grunt Mix** 2 10 oz. **33¢**  
**Plum Pudding** Richardson & Robbins 16 oz. **35¢**  
 Save on Famous A&P Coffee  
**Eight O'Clock** Mild and Mellow 1 lb. bag **84¢**  
**Red Circle** Rich and Full-bodied 1 lb. bag **86¢**  
**Bokar** Vigorous and Winy 1 lb. bag **88¢**  
**Mazola Oil** For cooking and salads gallon **2.09**  
**Mazola Oil** For cooking and salads pint **35¢** quart **65¢**  
 AMERICA'S FOREMOST FOOD RETAILER... SINCE 1859  
**A&P Super Markets**  
 THE GREAT ATLANTIC & PACIFIC TEA COMPANY  
 These prices effective thru Saturday, Nov. 14th in Super Markets and Self-Service stores only.

Purse-Pleasing Pantry Favorites!  
**Niblets** Whole Kernel Corn Fresh Corn Off the Cob 2 12 oz. cans **31¢**  
**Chicken of the Sea Tuna Fish** White Meat 7 oz. can **37¢**  
**Campbell's Soups** Mushroom, Vegetable-Beef or Clam Chowder 2 10 1/2 oz. caps **31¢** 6 10 1/2 oz. cans **91¢**  
**Libby's Peas** Garden Sweet 2 17 oz. cans **37¢**  
**Oreo Cookies** Cream Sandwich 12 oz. pkg. **33¢**  
**My-T-Fine** Instant Desserts 3 pks. **25¢**  
**Dry Milk Solids** White House Non-fat dry milk 2 1 lb. **57¢**  
**Liverwurst Spread** Stahl-Mayer 3 1/2 oz. **16¢**  
**Broadcast Chili Con Carne** 16 oz. **25¢**  
**Beardsley Shredded Codfish** 10 1/2 oz. **19¢**  
**Beardsley Codfish Cakes** 10 1/2 oz. **20¢**  
**Star Kist Tuna Fish** Chunk style 6 1/2 oz. **35¢**  
**Cocoa Marsh** Chocolate syrup 16 oz. jar **27¢**  
**Q-T Cake Frosting** Chocolate or White 2 5 1/2 oz. pks. **29¢**  
**Sail All Purpose Detergent** 2 19 oz. pks. **39¢**  
**Gerber's Cereals** Barley, Rice or Oatmeal 8 oz. **16¢**  
**Red Cabbage** Greenwood's Home Style 2 16 oz. jars **35¢**  
**Oling Peaches** Libby's or Del Monte 29 oz. **29¢**  
**Adam's Korn Kuris** A tasty snack 16 oz. **25¢**  
**Angel Feed Mix** Pillsbury 14 oz. **57¢**  
**S. O. S. Scouring Pads** 2 pks. of 10 **43¢**  
**Boraxo** For cleaning dirty hands 8 oz. **17¢**  
**20 Mule Team Borax** 16 oz. **18¢**  
**Octagon Laundry Soap** 3 pks. **23¢**  
**Parson's Ammonia** "Sudsy" qt. bot. **21¢**  
**Karo Blue Label Syrup** 24 oz. bottle **23¢**  
**Lint Liquid Starch** 2 quart **35¢**  
**Kirkman Detergent** For family laundry large 30¢ giant 69¢  
**Bab-O Cleanser** With special label 2 cents off each can 2 14 oz. cans **19¢**  
**Woodbury Soap** Buy 3 cakes at regular price... get 1 for 1 cent 4 regular 24¢ cakes **29¢**  
**Woodbury Soap** Buy 3 cakes at regular price... get 1 for 1 cent 4 bath cakes **35¢**  
 All A&P Super Markets and Self-Service Stores  
**Open Fridays to 9 P. M.**